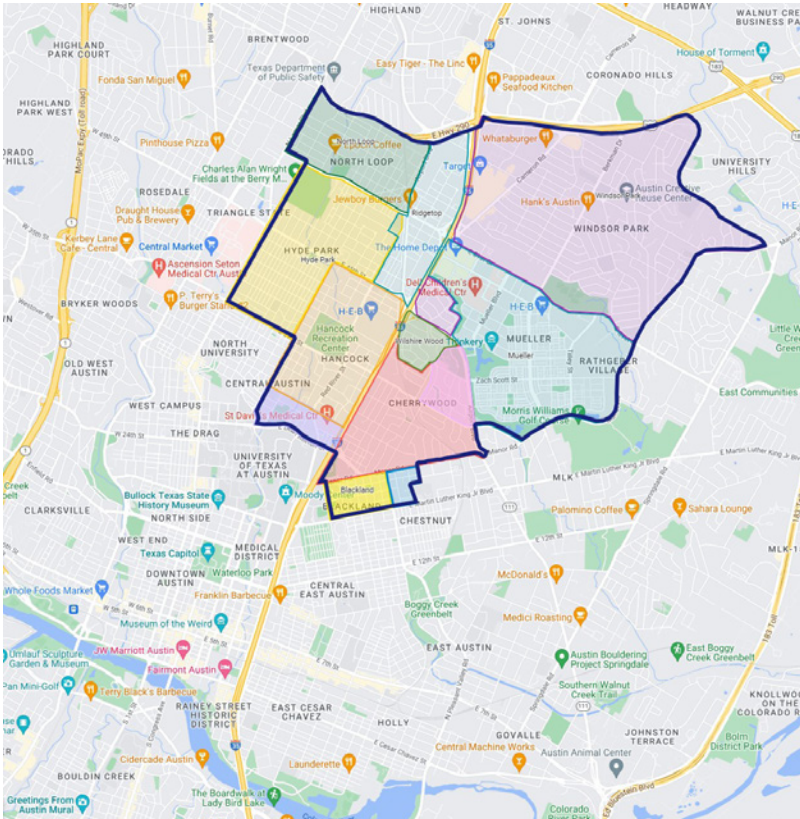


North Central I-35 Neighborhood Coalition (NCINC)

UPDATE ON TxDOT's I-35 CAPITAL EXPRESS CENTRAL PROJECT

Hyde Park Neighborhood Association
4 March 2024





The North Central I-35 Neighborhood Coalition

13 Member Neighborhoods on both sides of I-35, totalling over 7 square miles of the city

Founded in 2000; reconvened in 2013
Approximately 8 miles in length

- Includes the Blackland, Cherrywood, Delwood 2, Eastwoods, Hancock, Holy Cross, Hyde Park, Mueller, North Loop, Ridgetop, Scheiffer-Willowbrook, Wilshire Wood/Delwood 1, and Windsor Park Neighborhood Associations

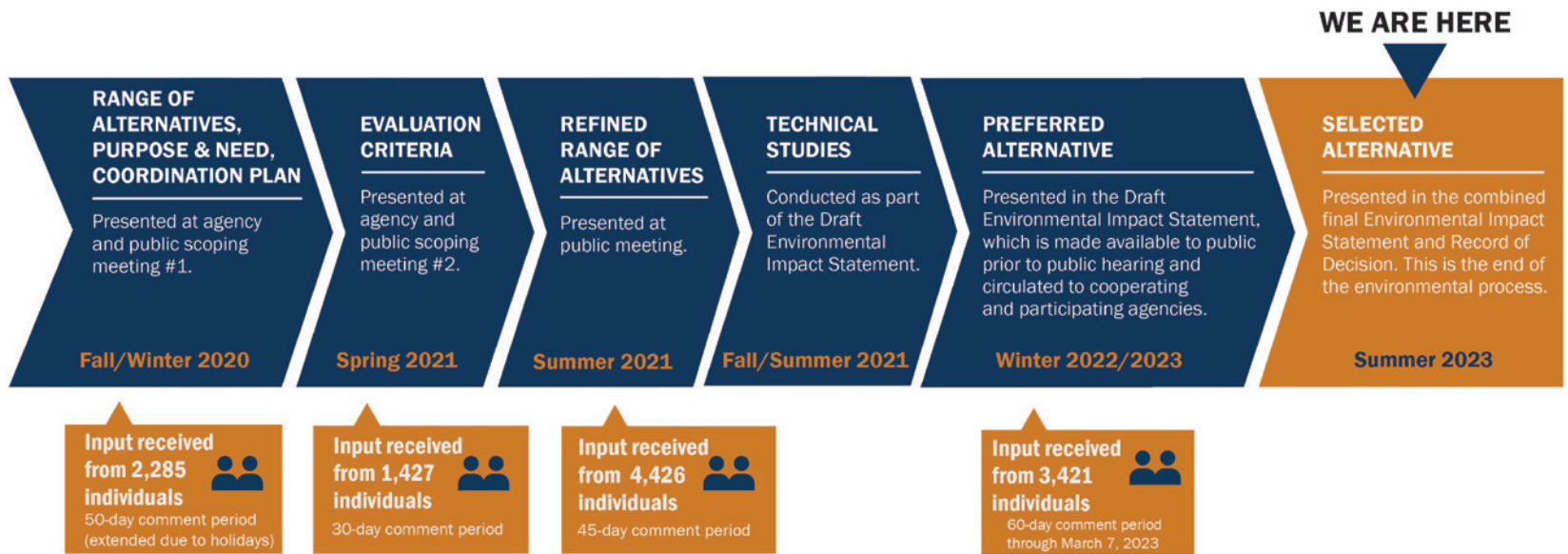




I-35 Capital Express Central Project

Highway 290 to SH71/Ben White Boulevard

- \$4.56 billion price tag
- Over 42 additional acres of right-of-way, mostly in the Cherrywood and Hancock neighborhoods
- At least 111 residences and businesses displaced
- Estimated minimum 8 years of construction
 - Estimated construction start spring 2024
 - Hyde Park area between 2026-2031
 - Noise will exceed City of Austin allowed levels



Final Environmental Impact Statement (DEIS) & Record of Decision

Federal environmental requirement (NEPA)

- Assesses design alternatives and environmental impacts
- Finalized August 18th, 2023



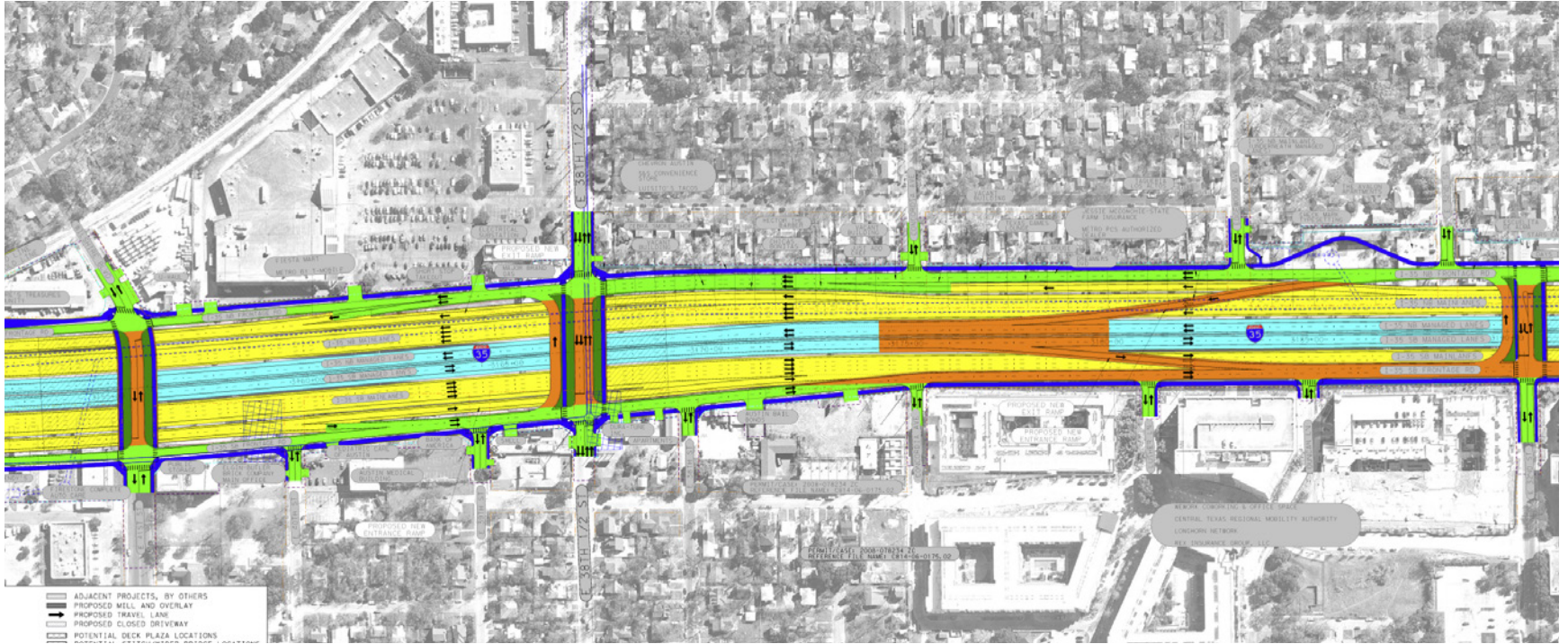
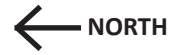
32nd Street to 41st Street



TODAY



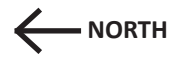
32nd Street to 41st Street



PROPOSED



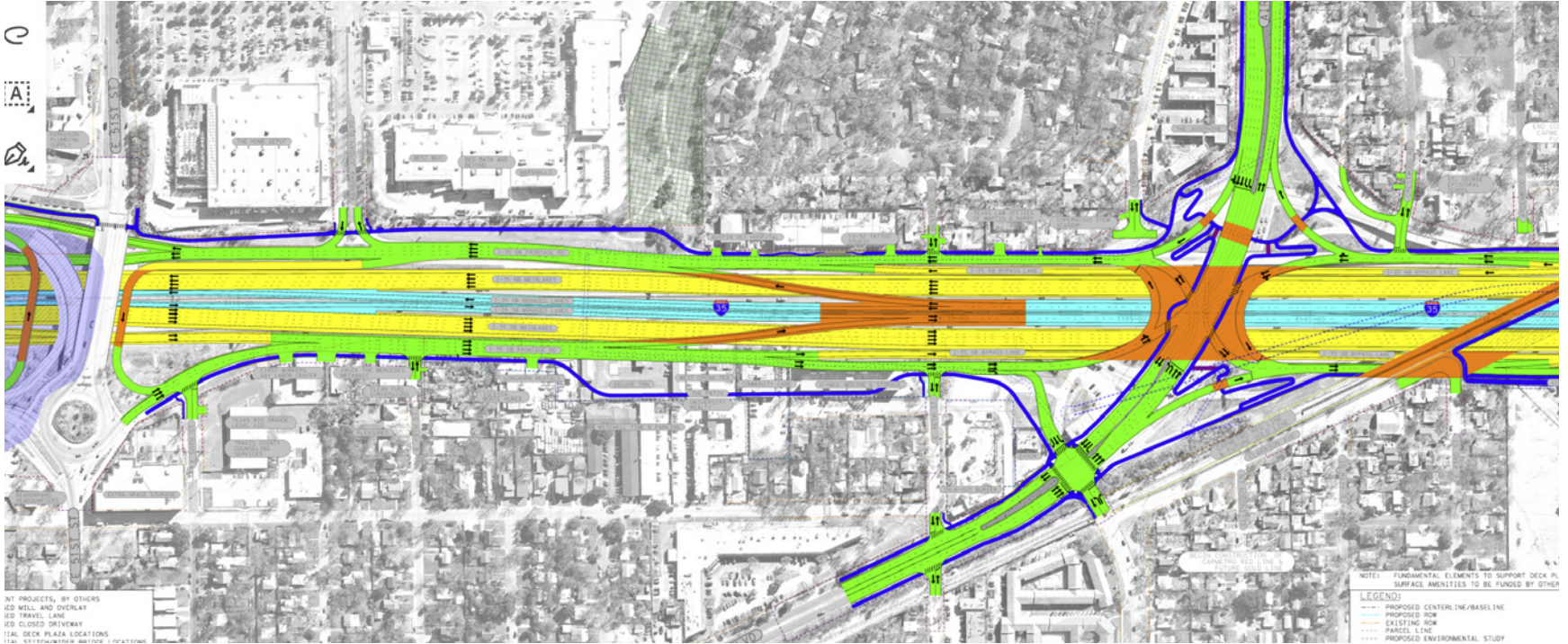
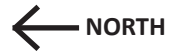
Red Line to 51st Street



TODAY



Red Line to 51st Street



PROPOSED



“Cap & Stitch” - TxDOT Conceptual Rendering



“Cap and Stitch”

- COA has applied for a \$105m Federal grant and would match \$45m of local money for first phase of caps
- COA has been awarded a \$1.12m Federal grant for further study of caps; issued RFQ in February 2024



	Acres	Scenario 1 - Roadway Elements Only (\$M)	Scenario 2- Roadway/ Tunnel/Cap Structure (\$M)	Scenario 3- Full Structure + Amenities (\$M)	Annual O&M Structural Estimate	Annual O&M Amenities Estimate
CC-4th	5.28	\$45	\$99	\$165	\$2.8 M	\$7 M
4th-5th	1.33	\$8	\$27	\$44	\$800 K	\$1.7 M
5th-6th	1.2	\$8	\$24	\$39	\$1 M	\$1.6 M
6th-7th	1.2	\$8	\$24	\$39	\$1 M	\$1.6 M
11-12th	2.1	\$15	\$43	\$69	\$1 M	\$2.7 M
38th-41st	5.21	\$89	\$107	\$172	\$2.5 M	\$6.8 M
41st-Red Line	4.76	\$89	\$98	\$158	\$2.3 M	\$ 6 M
Red Line-Airport	2.74	\$56	\$56	\$90	\$1.3 M	\$3.6 M
Caps Only Total		\$165	\$478	\$776	\$13 M	\$31 M
Design Costs		\$30	\$30	\$30+ amenities design		
Total Project Costs		\$195	\$508	\$806+		

“Cap and Stitch”

- COA has applied for a \$105m Federal grant and would match \$45m of local money for first phase of caps
- COA has been awarded a \$1.12m Federal grant for further study of caps; issued RFQ in February 2024



At our last meeting, we asked:

Q: How familiar are you with TxDOT's plans for I-35 in central Austin?

Q: How familiar are you NCINC?

Q: What do you think is the most important I-35 issue facing Hyde Park?

Q: Do you think HPNA should be involved in actions to mitigate for the I-35 expansion?



Thank you.

North Central I-35 Neighborhood Coalition
admin@ncinc.org

