

# April Meeting

## HPNA General Meeting Agenda for April 1

Hybrid Meeting: In person at Griffin School  
(5001 Evans Avenue) and on Zoom

Meeting Topic: Discussion of Neighborhood  
Issues and City Hall Update from  
Council Member Zo Qadri

- Message from Helping Hand Home
- Update from Hope Food Pantry
- Updates on Neighborhood Issues including Crime, Graffiti, I-35 Expansion, and HPNA's 50th Anniversary
- City Hall Update from Council Member Zo Qadri
- Announcements

We hope to see you at the meeting!

Not an HPNA member?

You're welcome to join the meeting anyway!

Join Zoom Meeting at 7 pm:

<https://us02web.zoom.us/j/4738130850?pwd=V3hlKzhLVGxIVTNqVCtVTHVZeVZYUT09>

Meeting ID: 473 813 0850

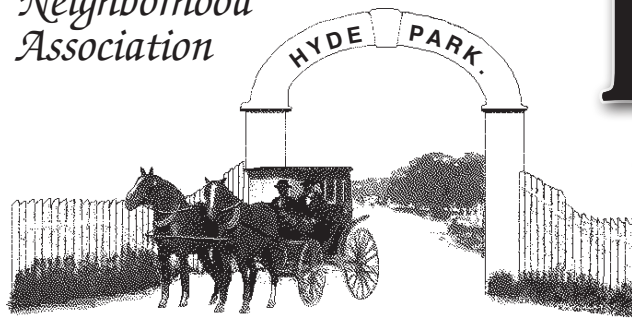
Passcode: 728004

**Naturalists at the Ney  
First Saturday of April,  
May, and June. See Page 9**



Dez Dalton collecting plants for April Naturalists at the Ney Event; Photo courtesy of City of Austin

*The Hyde Park  
Neighborhood  
Association*



# Pecan Press

April 2024 • National Register District Neighborhood • Vol. 50, No. 4

## New Neighbors at the Park

After years of maintenance work by the neighborhood and financial input by the city of Austin, Shipe Park has a new plan for its future. At the March meeting of the HPNA Steering Committee, representatives of the Austin Development Review Department laid out plans to surprised neighborhood leaders, delighting some and alarming others.

### Pecan Place



According to Wendell Towery, Development Review Department Chair, plans call for the construction of a four-story apartment complex built in a confluence of turn-of-the-century architectural styles, including Italianate and Eastlake. "With its wood shingle roof, wrap around ground floor porch, and muted, earth-tone Victorian paint scheme, this building will be a neighborhood showpiece," he said. Although it cannot be considered a contributing structure in the historic Hyde Park neighborhood, Towery said the structure will be more typical of turn-of-the-century architecture than the vast majority of commercial and residential structures already in Hyde Park.

Towery said the building, to be called Pecan Place, is the result of the passing by City Council of part three of the H.O.M.E. initiative. The first part resulted in multiple additional housing structures on each lot; the second part resulted in the subdivision of lots. The third part, an unforeseen addition on the part of City Council, provided for the use of city parks as locations for the construction of apartment buildings. The structure itself will be the result of a cooperative agreement between the city and private developers.

He said Shipe Park was chosen because of its location in Hyde Park, known for its charm and historical significance. It will join Pease Park and Zilker Park as one of the first parks to be appropriated for the construction of housing.

**Continued on page 18**

# From the Desk of the President



Council Member Zo Qadri will be joining us for this month's General Meeting. He will give us a short update from City Hall and will listen to our discussion of different neighborhood issues. Unlike at CM Qadri's prior visit, he does not plan to take questions from the membership. Instead, he wants to attend an HPNA meeting and see and hear what we are about. Among the issues we will discuss at the meeting are crime, graffiti, the I-35 expansion, and HPNA's 50th Anniversary celebration. I hope you will come to the meeting to see CM Qadri and your neighbors.

As you will read in the minutes in this issue, the March HPNA General Meeting hosted Jett Hanna and Dick Lavine, two candidates running to fill two of three positions on the Travis County Central Appraisal District Board of Directors. The election to fill these positions is on Saturday, May 4 and will likely be the only item on the ballot. Early voting starts April 22, 2024.

The way to become a member of the Appraisal Board of Directors has changed. In the past, the Directors had been appointed by the county, the city, and the school district that are part of the appraisal district. However, in last year's legislative session, a bill was passed to change three of the board positions from appointed to elected. While I am a big fan of elections, my experience tells me that the Legislature often has something up its sleeve when it schedules an election to which few voters will be paying attention. That appears to be the case here. Perhaps the Legislature wants to see some like-minded partisans sitting on the Board, and a glance at some of the candidates who are currently running for the Board suggests that is the case.

Messrs. Hanna and Lavine told us they are concerned about the



Board becoming politicized. We should be concerned too, as this Board plays an important role in ensuring that county tax appraisals are performed fairly and professionally. I urge you to pay attention to the upcoming election, research the candidates, and vote! For more information about the upcoming election, please read <https://www.texastribune.org/2024/01/11/texas-appraisal-district-board-elections/> and <https://theaustinbulldog.org/first-ever-opportunity-to-elect-appraisal-board-members/>.

Continued on page 17

## Hyde Park Neighborhood Association

P. O. Box 49427 • Austin, TX 78765  
[www.austinhypark.org](http://www.austinhypark.org)

— HPNA Officers & Steering Committee —

### President

• Kevin Heyburn.....kmheyburn@gmail.com

### Co-Vice Presidents

• Kathy Jackson  
 • Paul Smith

### Co-Secretaries

• Kelsey Brown.....kelseyelizabethbrown@gmail.com  
 • Katie Vignery.....vigneryk@gmail.com

### Co-Treasurers • PO Box 49427, Austin, TX 78765

• Ann Duncan.....sлом3@gmail.com  
 • Lorre Weidlich.....lweidlich@mail2sevensas.com

### Additional Steering Committee Members:

• Sharon Brown • Stephen Gonzalez • Holly Granato •  
 • Lisa Harris • Marsha Riti • Katie Turner •

— HPNA Committees & Task Forces —

### ASH (joint HPNA-CT committee)

• John Williams.....jawilli@grandecom.net

### Austin Neighborhoods Council Rep.

• Lorre Weidlich.....lweidlich@mail2sevensas.com

### Church-Neighborhood Liaison

• Phil Seibert, phil.seibert@gmail.com

### Crime & Safety • Andy Jones, wajones007@gmail.com

### Development Review • David Conner, daypaycon@yahoo.com

### Finance • David Conner, daypaycon@yahoo.com

### Flooding • Kevin Heyburn, kmheyburn@gmail.com

### Graffiti Patrol • Lisa Harris, ljharris@yahoo.com

### Historic Preservation • Joan Burnham, jgiburnham@gmail.com

### Homes Tour • Kip Dollar, kipdollar@gmail.com

### Membership • Katherine Mydra

### Neighborhood Planning • Karen McGraw, mcgrawka@earthlink.net

### Nominating • Adam Wilson adam@griffinschool.org

### Parks & Public Space • Mark Fishman, mlfishman@gmail.com

### Social Events Coordinators • Marsha Riti, marshariti@gmail.com

• Stephen Gonzalez, stephen.gonzalez.sd@gmail.com

• Katie Turner, katieturner050@gmail.com)

### Social Media Coordinator • Ellie Hanlon, ellie.hanlon@gmail.com

### Technical Coordinator • Chris Wooster, chriswooster@gmail.com

### Tree Preservation • John Walewski, jwalewski@civil.tamu.edu

## HPNA Business Members

Woodeye Construction and Design

Suzanne Pringle, Realtor

JET of Texas: Carport, Patio, and Pool Shade Cover

Chris Wooster Creative

Onella Home Care

### District 9 Contacts

Email: District9@austintexas.gov

Phone: 512 978-2109

Staff:

• Sara Barge, Chief of Staff

512-978-2142.....sara.barge@austintexas.gov

• Melissa Beeler, Senior Policy Advisor

512-978-2144.....Melissa.beeler@austintexas.gov

• Caleb Pritchard, Communications Policy Advisor

512-978-2134.....caleb.pritchard@austintexas.gov

• Natalie Deller, Policy Advisor

512-978-2184.....natalie.deller@austintexas.gov

• Anna Muckelroy, Director of Community Outreach

512-978-2109.....anna.muckelroy@austintexas.gov

## Pecan Press

The *Pecan Press* is published monthly by the Hyde Park Neighborhood Association in Austin, Texas. Advertising deadline: 15th of the month preceding publication.

Editorial deadline: 10th of the month preceding publication.

### Editor

Lorre Weidlich lweidlich@mail2sevensas.com

### Poetry Editor

Charlotte Herzele herzele@gmail.com

### Puzzle Editor

Steve Bratteng

### Production Manager & Advertising Director

Robert M. Farr, 731-0617, rudeboy.robbo@gmail.com

### Payments for Ads

HPNA, P.O. Box 49427, Austin, TX 78765

### Distribution Coordinator

Rimas Remeza, 4105 Ave. F, 371-3158, rimasx@yahoo.com

### Area Coordinators

N of 45th/W of Duval

• Rosa Maria Lopez Reed .....elsalvadorchrist@yahoo.com

N of 45th/E of Duval

• Jay Gerard & Carrie Laughlin .....371-1546

S of 45th/W of Speedway

• Betsy Clubine.....betsyclubine@gmail.com

S of 45th/E of Speedway

• Martha Campbell.....452-2815

### APD Representative for Hyde Park

• Phillip Sparkman

For the Baker District, call..... 512-974-5340

### Submissions to Pecan Press

• Send your articles, letters, and photos by the 10th of each month to Lorre Weidlich at [lweidlich@mail2sevensas.com](mailto:lweidlich@mail2sevensas.com).

*Opinion articles & letters to the editor must not exceed 500 words.*

• Send your poems to Charlotte Herzele at [herzele@gmail.com](mailto:herzele@gmail.com).

*All poems, even if written under a pen name, must include a name and contact information for identification and verification purposes.*

# City of Austin Un-Saves Hyde Park

While the Hyde Park Neighborhood Association (HPNA) celebrates fifty years of ongoing efforts to save this beautiful, historic, and wonderfully livable Austin jewel, the City of Austin continues its march to undo this work by whittling away at hard won protections.

Hyde Park, in its current form, is the result of decades of hard work by neighborhood residents, property owners, and leaders. Back in 1974, when HPNA first formed, the city was busy allowing demolition of historic homes for church parking lots and rezoning homes for apartment buildings mid-block on the Avenues. Staving off at least some of the bulldozers was a major feat at that time, and the parking lots that were constructed now lie largely vacant most days.

Since then, HPNA has produced 44 Homes Tours to educate the public on the potential for restoring what many deemed unsaveable homes to their former beauty, comfort, and livability. The Homes Tours not only show what is possible – there are many stories of folks buying their own Hyde Park homes after attending a tour – but have helped fund HPNA’s neighborhood protection projects.

HPNA has also supported many new area developments over the years, ensuring an abundant mix of multi-family housing, duplexes, garage apartments, and commercial businesses without destroying the historic character of the area. Our neighborhood has demonstrated that both preservation and new development can be successfully accommodated in Austin. For a more complete history of Hyde Park development, go to the HPNA website ([austinhypark.org](http://austinhypark.org)) to read the “History of Hyde Park” articles.

In other cities, a neighborhood like Hyde Park might have been saved and protected by a designated historic district decades ago. Yet for many years,

Austin officials inexplicably contended that the historic district provisions in the city code could not be used by Hyde Park or any other neighborhood. This position would not change until the late 1990s.

Meanwhile, in the 1980s, leaders of Hyde Park and other central neighborhoods worked to get Conservation District protections included in the Austin city code and then spent the next fifteen years working to establish conservation zoning to preserve the traditional front-porch friendly atmosphere of these areas. After hundreds of volunteer hours, many neighborhood surveys, and dozens of public meetings, the city finally adopted the Hyde Park’s two Neighborhood Conservation Combining Districts (NCCD) in 2002 and 2005. Soon after this, the citywide McMansion ordinance softened the effects of massive square footage looming over adjacent homes. For Hyde Park, the last piece needed to stop demolitions was the Hyde Park Local Historic District – funded by HPNA and supported with extensive volunteer hours – which the city finally adopted in 2010.

Regrettably, in the last few years, the current City Council has sponsored and supported code changes that threaten to undo much of this work, reverting to the days when homes might simply disappear in the night. Did they present these ideas to neighbors? No. Unlike HPNA’s efforts, which have always been conducted with transparency and extensive information – including public meetings, notices, and *Pecan Press* articles – the Council has chosen to enact blanket

**Continued on page 16**

## Join the Hyde Park Neighborhood Association



Join and renew online at  
[www.austinhypark.org/join](http://www.austinhypark.org/join).

- Secure online payment
- Opt-in for auto renewal
- Email reminders for renewals
- Join for multiple years

Residents 18 or older living within the boundaries of Hyde Park are welcome to join. Current members may vote on HPNA resolutions concerning issues facing our community. New and lapsed members (over six months) must wait 30 days after dues payment to vote on HPNA resolutions.

Learn more about membership options and policies at [austinhypark.org/join](http://austinhypark.org/join) or join us at a general meeting.

HPNA does not share, sell, or publish any contact information; it’s only used for membership administration.

**Questions?** Email [hydeparkna@gmail.com](mailto:hydeparkna@gmail.com).

To receive reminders about HPNA events, email [subscribe+hpna-notice@googlegroups.com](mailto:subscribe+hpna-notice@googlegroups.com).

### Need to join by mail?

Complete and mail this form with cash or check (payable to HPNA) to  
**HPNA, P.O. Box 49427, Austin, TX 78765.**

Name: \_\_\_\_\_

Email (required): \_\_\_\_\_

Address: \_\_\_\_\_  
\_\_\_\_\_  
\_\_\_\_\_

Phone: \_\_\_\_\_

New Member  Renewing Member

**Membership Types (choose one):**

- Individual, resident: \$5/year
- Individual, non-resident (non-voting): \$5/year
- Senior, resident (65+): \$1/year
- Student, resident: FREE
- Business (non-voting): \$25/year



# SAM & RIPPLE ARCHER

## Your Local Hyde Park Real Estate Experts

### RECENT HYDE PARK AREA TRANSACTIONS:



507 FRANKLIN A  
3 BD | 3.5 BA  
2,500 SF



3805 AVENUE G  
3 BD | 2 BA  
1,882 SF



4608 AVENUE G  
4 BD | 3.5 BA  
2,883 SF



Sam helped my wife and I find our home in Austin and was amazingly helpful throughout the process. His deep knowledge of the area and his strong network helped us make a deal that would have been impossible without him on our side.



BUYER

**JUICE**  
REAL ESTATE GROUP

SAM ARCHER  
Juice Real Estate Group  
sam.archer@compass.com  
512.633.4650

Compass is a licensed real estate broker and abides by Equal Housing Opportunity laws. All material presented herein is intended for informational purposes only. Information is compiled from sources deemed reliable but is subject to errors, omissions, changes in price, condition, sale, or withdrawal without notice. This is not intended to solicit property already listed. Photos may be virtually staged or digitally enhanced and may not reflect actual property conditions.

## Monthly Calendar

### April

- 1 — HPNA General Meeting
- 5 — Recycling Pickup
- 6 — Naturalists at the Ney
- 8 — Steering Committee Meeting
- 11 — Waymo Zoom Meeting with HPNA
- 13 — Longhorn Run through Hyde Park
- 17 — Pecan Press Deadline
- 19 — Recycling Pickup

### May

- 4 — Election for Board of Directors for Travis County Appraisal District
- 4 — Naturalists at the Ney

## HPNA General Meeting Minutes: March 4, 2024

President Kevin Heyburn called the meeting to order at 7:02 p.m.

Kevin noted that the presentation from Helping Hand Home, originally scheduled for March, is now on the HPNA April agenda.

### Philanthropy Spotlight: Ladies Let's Talk

Lisa Harris introduced Chichi Armstrong, President of the non-profit Ladies Let's Talk. Chichi, who herself has been a volunteer working with refugee communities for many years, focuses on recruiting and supporting volunteers.

Lisa noted that in many immigrant households, adult women do not have opportunities to speak or practice English. Lisa, who has volunteered since late 2020, noted the opportunity for volunteers to meet people from many countries. She invited HPNA members to contact her for more information.

Chichi explained that Ladies Let's Talk, which grew out of earlier local refugee organizations, has been in existence for five years. Before that, Refugee Services of Texas was one of a handful of organizations serving the immigrant and refugee population. When Afghans starting arriving in the US in greater numbers, Refugee Services became overwhelmed and eventually closed in April, 2023. Chichi noted that recently the pace of refugee arrivals has slowed. Now relatively more people are coming from the Congo and South American countries.

The goal of Ladies Let's Talk is to help refugee and immigrant women achieve belonging in their new community. In addition, from its beginnings the organization has prioritized the recruitment and training of volunteers. This is especially true today, as the number of volunteers is not increasing as much as the need for them.

Continued on page 14

## Around & About the Avenues

**New Hyde Park Restaurant Recognized by Austin Chronicle and Texas Monthly.** Bureau de Poste, inside Tiny Grocer in the former post office building at 43rd Street and Speedway, received a highly positive review in the March 8 issue of the *Austin Chronicle*. Reviewer Melanie Haupt stated, "I'd be lying if I said I wasn't actually thrilled to have a bookstore, an upmarket bodega, and a French bistro occupying the space where I used to buy stamps and mail bills." See <https://www.austinchronicle.com/food/2024-03-08/restaurant-review-bureau-de-poste/>. In addition, the March, 2024 issue of *Texas Monthly* rated it one of the best new restaurants in Texas. See <https://www.texasmonthly.com/food/best-new-restaurants-in-texas-2024/>.



**Austin Monthly Recognizes Hyde Park as One of Austin's Hottest Neighborhoods.** The March/April 2024 issue of *Austin Monthly*, in an article by Madeline Hollern and Saba Rahimian, lists Hyde Park as one of the eight hottest neighborhoods in Austin. The article states, "In this historic district featuring large Tudor Revival homes and Victorian estates, it's more common to see a thoughtful renovation than a teardown. The sidewalks are dappled with shade from centuries-old live oak trees, and longstanding businesses like Blue Moon Glassworks, Quack's 43rd Street Baker, and Avenue B Grocery & Market are points of pride for residents." It also states that the development of the former post office property "breathes new life into the established area." See <https://www.austinmonthly.com/the-8-hottest-neighborhoods-in-austin-hyde-park/>.



**Route for Longhorn Run 2024 Runs through Hyde Park.** The Longhorn Run, the 5K and 10K marathon starting at 8 am on Saturday, April 13, will run north on Speedway to 44th Street and then back south on Speedway. Speedway will close at approximately 7:30 am and re-open when the last runner has passed the area (approximately 10 am). During that time, Speedway will be a no parking zone. For more information, see [utlonghornrun.com](http://utlonghornrun.com).



Progressive K-8 in Hyde Park Since 2004

[ahbcs.org](http://ahbcs.org)



BERBAS GROUP  
BRAMLETT PARTNERS



## PSA: YOU COULD BE PAYING THOUSANDS MORE IN PROPERTY TAXES THAN YOU SHOULD BE

### **If you own your home, do you have your Homestead Tax Exemption filed?**

We found that approximately 12% of owner-occupied homes in Austin don't have their Homestead Exemption filed.

A Homestead Exemption:

- Lowers your property taxes by reducing the taxable value of your property
- Caps the increase in taxable value at 10% annually
- Is easy to file online, at no cost to you! (QR code below)

**Please file your homestead exemption now to ensure you don't overpay this year!**

Instructions for filing your exemption:



**Jen Berbas**

Your Hyde Park Neighbor  
Platinum Top 50 Austin Realtor '18-'24  
(512) 655-9329  
Jen@BerbasGroup.com

# Waymo Seeks Community Feedback in Hyde Park for Autonomous Car Launch



Waymo, an Alphabet and Google affiliate, is advancing its autonomous car project in Austin after 10 years of testing across Hyde Park, Hancock, and Mueller neighborhoods.

Known for their distinctive white Jaguar electric vehicles equipped with advanced radar and camera technology, Waymo aims to transition these self-driving cars from testing to operational ride-hailing services. This initiative places Austin alongside Phoenix, San Francisco, and Los Angeles as inaugural cities for the service's launch in 2024.

In preparation for this significant step, Waymo representatives are engaging with local communities to discuss service details, showcase the technology, and gather valuable input. A key meeting with the Hyde Park Neighborhood Association (HPNA) is scheduled for April 11 at 7 pm via Zoom (remote). Interested parties are encouraged to RSVP to [chris-wooster@gmail.com](mailto:chris-wooster@gmail.com) for an invitation.

For more information on Waymo's service in Austin, visit <https://waymo.com/waymo-one-austin/>.



## Pecan Press Advertising Rates

(Effective September, 2015)

Size	(width X height)	Price
Back Cover	(7.5" X 10")	400.00
Full Page	(7.5" X 10")	300.00
1/2 Page	(7.5" X 5")	190.00
1/4 Page	(3.63" X 5")	100.00
1/6 Page	(3.63" X 3.25")	80.00
1/9 Page	(3.63" X 2.25")	60.00
1/12 Page	(3.63" X 1.63")	50.00

## Common Names

Word Find by der Brat

C O M M O N L Y I T S A N A M E  
 B P U R A I N L I L Y S I N E X  
 O V A L R O U N D O B A T S H O  
 B R A I L I L L E L E E C H C B  
 C C A N N O T L U C K O U T R L  
 A O O N U T B E I M I R B E A A  
 T Y R P L U B A N D I T K I N C  
 K O T O P O O R O D A A R P O K  
 A T A Z N E E D U R N M A R M W  
 O E O N U D R B A S H E R M O I  
 E L E P L I D H E W H O O A P D  
 V T Z E J E L L E V E O S S O O  
 I N X O R A T I V A S I L K S W  
 L O V E S T H I S E D I T U S K  
 B E L L A E V E N I N G U N U M  
 O P P R I M R O S E P I N K M O

[Numbers in parentheses = number of letters in answers]

- Lupines in TX, state flower. (10) \_\_\_\_\_
- Blood sucking worm Hirudo. (5) \_\_\_\_\_
- Tree: shed leaves in spring, Quercus fusiformis. (4,3) \_\_\_\_\_
- Fly with hands, Chiroptera. (4) \_\_\_\_\_
- Maple of Central Texas, Acer negundo. (3,5) \_\_\_\_\_
- Silent O marsupial, Didelphis virginiana. (7) \_\_\_\_\_
- King of migrating butterflies? Danaus plexippus. (7) \_\_\_\_\_
- with 9. Oenothera speciosa. (7) \_\_\_\_\_
- see 8. Some call it pink buttercup. (8) \_\_\_\_\_
- Indian \_?\_. Castilleja indivisa. (10) \_\_\_\_\_
- Canis latrans, Howl! (6) \_\_\_\_\_
- Cercis canadensis. Small tree, pink flowers before leaves in spring. (6) \_\_\_\_\_
- Crotalus, Deadly but with a warning sound. (11) \_\_\_\_\_
- Latrodectus, Dark lady, no husband! (5,5) \_\_\_\_\_
- Dasyus novemcinctus, Harbors leprosy. (9) \_\_\_\_\_
- Pops up after a rain, Zephyranthes. (4,4) \_\_\_\_\_
- Metal in name; bad bite! Agkistrodon. (10) \_\_\_\_\_
- Short tail; sharp claws, Lynx rufus. (6) \_\_\_\_\_
- Mephitis, Striped stinker. (5) \_\_\_\_\_
- Alces, Biggest member of deer family. (5) \_\_\_\_\_

Answers on page 18



507 E 42nd St. · \$1,400,000  
3 beds · 3 baths · 2,239 sq. ft.

Coming Soon



PROPERTY GROUP  
RESIDENTIAL · LAND · COMMERCIAL  
AUSTIN, TEXAS



4115 Avenue A · \$1,350,000  
4 beds · 2.5 baths · 2,171 sq. ft.

SOLD



2105 SL Davis Ave. #1 · \$1,299,000  
3 beds · 3 baths · 2,000 sq. ft.

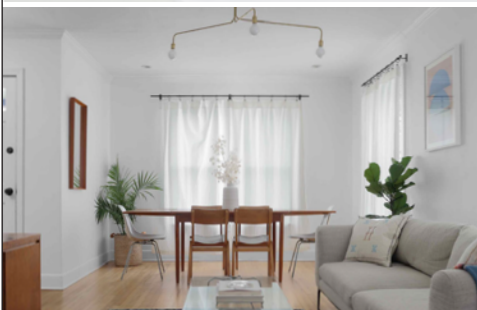


2102 EM Franklin Ave. · \$829,500  
3 beds · 3 bath · 1,806 sq. ft.



208 E 33rd St. · \$795,000  
2 beds · 2 baths · 1,183 sq. ft.

SOLD



1006 Ellingson Ln. · \$775,000  
2 beds · 2 baths · 1,104 sq. ft.



304 W 41st · \$699,000  
3 beds · 2 bath · 1,459 sq. ft.

SOLD



2301 Lawnmont Ave. #2 · \$425,000  
2 beds · 2 baths · 908 sq. ft.

## REAL ESTATE BY THE NUMBERS

Austin Board of Realtors, MLS data shown is for Austin area addresses January 2024



### TAMMY YOUNG

Principal, Owner  
Realtor®, GRI, CRS, CLHMS  
512-695-6940 c 512-695-6940  
tammy@seedpropertygroup.com



MEDIAN PRICE FOR  
SINGLE-FAMILY HOMES  
-4.4% to \$430,000



NEW LISTINGS  
ON THE MARKET  
+5.1% to 3,064



AVERAGE DAYS  
ON THE MARKET  
+9 days to 86 days



ACTIVE HOMES  
ON THE MARKET  
-3.6% to 7,976



AVERAGE  
INVENTORY  
+.2months to 3.2months



PENDING  
SALES  
+3.8% to 2,480

When it's time to choose a Realtor®, choose a true Hyde Park expert  
with proven results marketing and selling our neighborhood's unique homes.

[www.seedpropertygroup.com](http://www.seedpropertygroup.com)

I live here, I work here. Your Hyde Park specialist.

Powered by **COMPASS**



# THANK YOU

\$6,751 raised from 56 donors!



## News from the Ney

Thank you to our dedicated Friends of the Elisabet Ney Museum group for Amplifying the Ney! I Live Here, I Give Here hosted a very successful 2024 Amplify Austin Day this month. 56 community members raised \$6,751 towards the museum's ongoing reimagining programs at the museum and in our historic landscape. We are excited to share how this support will shape the future of the Ney in supporting artists, arts education, and so much more.

The Elisabet Ney Museum grounds are home to a variety of animals and insects along with native grasses and forbs. Ney cared deeply about the environment

she inhabited, so much that she purposefully selected a wild and native space for her Austin studio, Formosa. Learn more about this unique historic landscape and entrench yourself in this environment with a new series of monthly events at the museum, Naturalists at the Ney. In this thematic series of workshops, museum educators and community partnering organizations will lead guided explorations and art making activities on the first Saturday of April, May, and June. We will learn about the colorful uses of plants, the hidden relationships under our feet, and the treasures used to create botanical art on the grounds around Elisabet Ney's Formosa studio. Be prepared to be outdoors in Ney's wild landscape.

**Naturalists at the Ney - Saturdays, April 6, 2024; May 4, 2024; June 1, 2024 - 10 am to 1 pm**

Celebrate Elisabet Ney and her legacy by joining us for our tenth annual Ney Day. To commemorate this iconic artist, we will host an afternoon event dedicated to women in the arts, sciences, and civic culture. As in years past, this outdoor community event will feature a ton of artist-led projects, demonstrations, games, music sets, and food vendors! Ney Day will be free and open to all ages as always.

**10th Annual Ney Day -Saturday, May 25, 2024 - 12 pm to 4 pm**

The Ney staff was out and about this month, representing the museum at Shipe Park as part of It's My Park Day hosted by the Austin Parks Foundation and spending time at the Austin Nature and Science Center learning about their awesome programs and animals. Thanks to the Friends of Shipe Park and the staff at the Austin Nature and Science Center.

Continued on page 17

**Naturalists at the Ney**

**FIRST SATURDAY OF THE MONTH  
4/6, 5/4, & 6/1  
10AM - 1PM**

**10TH ANNUAL Ney Day**

**SATURDAY MAY 25TH  
1PM-4PM**

**TAKE PART IN THE NEY'S HISTORIC LANDSCAPE THROUGH OUR NEW SPRING WORKSHOP SERIES AND GET YOUR HANDS IN THE DIRT.**

**CELEBRATE ELISABET NEY'S LEGACY AND DEDICATION TO WOMEN IN THE ARTS, SCIENCES, AND CIVIC CULTURE AT OUR ANNUAL NEY DAY FESTIVAL.**

# It's My P



Andy Brown Aerating Tree Roots



Mulching the Big Tree



The It's My Park Day Team, photo Katie Inselman

## 2024 It's My Park Day Recap

Mulch, music, munchies, and muscle made March's first Saturday at Shipe Park both productive and a really good time. Thanks to 100+ volunteers, Quacks' goodies, and the live music of Blowcomotion, the Austin Parks Foundation's annual It's My Park Day provided a tremendous investment in the sustainability of the gem of Hyde Park.

The primary task was to spread more than 25 cubic yards of mulch around the many heritage trees around the park. By aerating the topsoil and covering with a 2" layer of mulch, the trees' roots are relieved of some of the compaction from use and given a tool to help regulate temperature and moisture control during the hot summer months. Secondly, compost was spread around the playing field to help the oft-used grass replenish its nutrients and prepare for another year of sunbathing, soccer playing, dog walking, bubble blowing, picnicking, and more.

On top of the work for the park, the annual work day proves a wonderful day of community as neighbors and friends work side by side with UT students and strangers (future friends?) in the stewardship of this great resource. It was so great to see families, both young and seasoned, come together to care for the park that provides them so much joy throughout the year.

The success of the day was amplified by the generous support of our community partners. Longtime support continued from Sam Archer at Juice Real Estate Group, Quack's 43rd Street Bakery, Whittlesey Landscape, Annette Patterson at Bramlett Residential, and Maas Verde landscape. Neighborhood newcomers and second year park supporters, Texas Standard and First Light Books, wasted no time connecting with Shipe Park, and we're so thankful. Always grateful for the Camarillo Family's support of the park's future. Be sure to mark your calendars for the first Saturday in March every year to join this effort.

— Madison Inselmann



At the Bottom of the Pile



On Top of the Pile, photo Kevin Heyburn



Jack Nokes Working with the Team

# Park Day



Blowcomotion



The Team at Work



Jill Nokes Addressing Participants

## We are the Friends of Shipe Park, Join Us

I wanted to follow Madison Inselmann's terrific report on the recent *It's My Park Day* at our beloved Shipe Park. Read his article to learn more about how volunteers showed up to give the park some landscape love and attention. Because of climate change, and because the park is so heavily used, this annual workday is essential to keep the trees and grounds healthy and resilient.

During the last 20 years, we – the Friends of Shipe Park (FOSP) – have been involved in several major park improvement projects, starting in the early 2000s with planting trees along Avenue F and followed by the lengthy process of following the new pool from conceptual design through construction. We were able to work with the city and the design team to get more amenities that park users wanted than were originally proposed. Building on the success of the pool, FOSP raised money to match a grant from the Austin Parks Foundation so that the historic park shelter or cabin could be restored. We lobbied for moving the swings and the sidewalks to protect the heritage live oaks and received a grant from the forestry department for some much-needed arborist work.

We do more than work on projects and events. We take our role as park stewards seriously. We keep a look out for plumbing leaks and graffiti, broken limbs, and missing valve covers; and we listen to park users concerns and requests and follow up with the Parks Department. And to celebrate the park, we host two other special events: the Pool Opening party and the Halloween movie night.

Friends, we need more young families to join FOSP to keep us effective and active. It's important for your children to see you giving back to the park you both enjoy. We know families with kids are stretched thin, but joining the group is a good way to volunteer with minimum time commitment and yet still have direct influence on how the park



Sign-in Table



At Work on the Mulch Pile

Continued on page 18

**GOOD  
NEIGHBOR  
POLICY**

**FRESHPLUS**  
GROCERY • MARKET • DELI  
HYDE PARK  
408 E. 43rd St. • 512/459-8922

Hyde Park Neighbors –

Biggs Plumbing, a commercial contractor for over 40 years, is now providing residential service.

Consider us for your:

- Kitchen and bath remodeling
- New tankless water heaters
- Service calls

We live in the neighborhood and understand the challenges of older plumbing. Let us help you with your next project.

512-837-5955  
[service@biggsplumbing.com](mailto:service@biggsplumbing.com)  
<http://www.biggsplumbing.com>

**Biggs  
Plumbing  
Company**

TX Masters License M36811

## Lettuce Recycle!

by Dena Houston

## Sunshine on My Shoulders! Spring is Here! Let the Cleaning Begin!

The flowers are blooming and we seem compelled to spring clean and reorganize. Cleaning and reorganizing always present the problem of what to do with all the stuff we want to get rid of. Here are some ideas for how to recycle the most common (and not so common) items.



### Lawn and Garden

#### Gardening Items

As we fill our gardens with lovely flowers and vegetables, we are left with the plastic flowerpots and the trays we get from the garden centers. Most of the garden centers will take these back to reuse them.

#### Lawn Equipment

New lawnmower? Finally, a new weed eater? Take the old ones to the City of Austin Recycle & Reuse Drop-Off Center (RRDOC). Use this link to make an appointment: <https://www.austintexas.gov/dropoffschedule>.



Following is a partial list of the items accepted at the Recycle and Reuse Drop-Off Center. For a complete list of accepted and non-accepted items, please check out this website: <https://www.austintexas.gov/faq/what-items-are-accepted-recycle-reuse-drop-center#overlay-context=department/austin-resource-recovery/faq>.

- aerosol cans – full or partially full. Empty ones can go into the blue bin.
- batteries
- chemicals – pool chemicals, herbicides, pesticides, and so forth.
- children’s plastic pools
- electronics



- microwaves
- plastic lawn chairs and furniture
- playground equipment
- refrigerators
- styrofoam
- televisions
- toiletries – shampoos, lotions, soap, and so forth (even half-full containers), plus those little bottles from hotels. These are placed in the reuse store, which is free for everyone.
- trash can
- window air conditioning units

## Electronics and Batteries

### Electronics

Orphaned remotes, obsolete video games, cell phones, miscellaneous cables and cords, printers, computers, hard drives, routers, and all those computer and electronic peripherals that don't work anymore can all be recycled at RRDOC. They will also take old ink cartridges.

### Batteries

Household batteries, including rechargeable, can be recycled at most Austin Public libraries. The RRDOC also takes all batteries, including car batteries.

Use this complete list of battery drop off locations in Austin: <http://austintexas.gov/page/battery-drop-locations>.

### What to Do with Stuff!

- **Assistance League** (<https://www.assistanceleague.org/austin/thrift-shop/>) Housewares in good condition (glasses, pots and pans, dishes) are always in demand at the Assistance League.
- **Austin Reuse Directory** (<https://austinreusedirectory.com/>) This is a wonderful resource, compiled by the City of Austin, to find out where to donate items in your area.
- **Buy Nothing** (<https://buynothingproject.org/>) The Buy Nothing Project is a global network of community groups that encourage giving away (without selling or bartering) consumer goods rather than throwing things away. It is accessed through Facebook and organized by neighborhood.

### What to Do with Special Items

- **Arts And Craft Supplies** – Austin Creative Reuse (<https://austincreativereuse.org/>) This location welcomes everything from fabric scraps to old slides. This is also a great place to shop.
- **Shredded Paper** – This needs to go into the green compost collection bin (not the blue recycling bin). It must be contained in a compostable or paper bag.
- **Old Toys and Other Household Items** – Plastic toys with no metal in them can be placed in your blue curbside bin. Please remove batteries.
- **Styrofoam** – The RRDOC accepts styrofoam. This

includes styrofoam meat trays (clean) and egg cartons. Packing styrofoam peanuts can also be taken to mailing stores like UPS and Pak Mail. They will happily reuse them. Packing peanuts cannot go to the RRDOC.

## Questions and Answers

*What happens to batteries when they are collected at the recycle & reuse drop-off center?* Batteries are sent to companies to recycle. There, they are separated by type (single use, rechargeable, and so forth). The metal casings are recycled and the zinc oxide is used to make other items (sunscreen and so forth). The potassium hydroxide in the alkaline batteries is used in the water treatment chemical industry. Lithium batteries are used to manufacture new lithium-ion batteries.

*Can paper towels with cleaning product on them be composted?* No, these cannot be composted and must go into the trash can.

*Are vacuum cleaner bags and their contents compostable?* No, they are not and must go into the trash can.

### From a Reader

I had a leg brace I wanted to recycle. In San Antonio, there is a project called Project Mend (<https://www.projectmend.org/>). It accepts durable medical equipment, including braces. These are made available to clients free of charge.

#### Please Remember:

- **Do Not Bag Recyclables**
  - **When in Doubt, Throw it Out!** Recycling and composting contamination is a huge problem. If you have exhausted all reuse possibilities and are still unsure, put the item into the trash can.
  - **Nothing Smaller than a Credit Card in the Blue Bin.**
  - **Remember the City of Austin Recycling Website:** <http://www.austintexas.gov/what-do-i-do>.
- Stay tuned for future tips for creative ways to recycle or reuse. If you have any questions or recycling ideas, please send them to [denahouston3309@gmail.com](mailto:denahouston3309@gmail.com).

*A vibrant and engaged high school community*



**GRIFFIN SCHOOL**

Cultivating individual potential  
and intellectual curiosity

[www.griffinschool.org](http://www.griffinschool.org)

---

# March Meeting Minutes...

## ...cont'd from page 5

---

### The Learning Programs

Ladies Let's Talk consists of four programs:

- Conversation Sessions (online): English-speaking female volunteers from all over the U.S. meet on Zoom with refugee and immigrant women who are learning English. The sessions revolve around conversation and fellowship. Ninety-minute sessions are held on Thursday evenings and Friday mornings. The sessions are drop-in. There are currently about 200 volunteers, but more are needed to meet the demand.
- Pronunciation Workshops: Three volunteers, all retired speech therapists, help advanced learners improve their English pronunciation so they can be better understood. Four sessions are conducted each week, with 35 to 40 participants. The program can accommodate 80 to 100 learners.
- English Practice Partners: A volunteer and a learner are paired for five weeks. They get together (on the phone, in person, on Facetime, and so forth) for a weekly hour of conversation.
- Basic English for Afghan women (in person): English reading and writing classes are held six hours a week for 22 Afghan women who have never been to school and cannot read or write in their native language of Pashto.

Where do learners come from? The women come from 82 countries, the top 10 being Brazil, Ukraine, Mexico, Colombia, Turkey, China, South Korea, Afghanistan, Haiti, and Venezuela.

### Financial Support

Donations can help Ladies Let's Talk in these ways:

- Supporting their first paid staff member – a program manager – to run the Basic English program and support the volunteers running other programs.
- Allow the board to focus on expanding services to reach more immigrant and refugee women. For example, there are 1,300 women who would like to join the program as learners.
- Allow the board to develop a comprehensive fundraising strategy that can support the continuation of Ladies Let's Talk.

### Program Results

In describing the program's successes, Chichi pointed out that some women have gone on to other classes or now have jobs.

She shared several comments from Ladies Let's Talk learners:

- "I love ladies let's talk class because I learned a lot of things from them. And I found friends there." (This woman just received her U.S. citizenship.)
- "Thanks for creating such a place for helping new immigrants."
- "I feel American now. I would like to learn the language of the country of which I will be a citizen, in the fastest and most beautiful way."

What volunteers say about the program:

- "I provided the 'second-generation immigrant

daughter' part of the conversation and [the Learner] shared about the growing pains of being a first gen immigrant and mother. I learned so much! Overall I had a great time."

- "I just wanted to let you know how much I enjoyed the session today. I look forward to future sessions. [The Learner] and I have formed a wonderful bond and I am so grateful for the introduction."

In response to Lorre Weidlich's question about instructional materials, Chichi cited an orientation session for the conversation class, as it has no structured instruction.

For more information about Ladies Let's Talk including volunteer opportunities, or to donate, visit their website: <https://www.lltaustin.org>.

### Board of Directors for Travis County Appraisal District

Kevin outlined the special May election to fill three positions on the Travis Central Appraisal District Board of Directors. Two candidates introduced themselves and spoke in more detail about themselves, the positions, and the election.

*Dick Lavine*, running for Place 2, reminded listeners that appraisals are based on real estate valuations. Individuals who want to protest appraisals can submit a form, talk in person with an Appraisal District representative, or request a review board hearing during which a panel and a review board make the final decision. Mr. Lavine pointed out that the nature of the Board of Directors has changed. In the past, most had been appointed by the Austin Independent School District. In last year's Texas Legislature session, a bill was passed to change three positions from appointed to elected. Mr. Lavine, who has previously served on the Board of Directors, fears that this change will politicize the appraisal process. His goal is to protect the integrity of the process.

*Jett Hanna*, running for Place 1, has also served on the Appraisal Board. He noted that the current appraisal system has changed significantly since he served in the late 1980s. The rules of the appraisal industry have changed, as have state laws. The result is "a very complex business." Mr. Hanna thinks it is important to make sure everyone on the Board of Directors understands how complicated the process is and that they also understand that the appraisal process was designed to be independent of the review board process. He noted that many things could go wrong in the process. "We need fair play," he concluded.

The election will be held on Saturday, May 4, and may be the only item on the ballot.

### Update on I 35 Expansion

Brendan Wittstruck reviewed the basics and status of the Capital Express Central Project. Currently the budget is \$4.5 to 4.6 billion, with an estimated minimum of eight years to complete the project. The project requires over 42 acres of right-of-way, mostly in Cherrywood and Hancock neighborhoods; and it will displace over 111 residences and businesses. Because TxDOT is not required to adhere to city legal codes, noise will exceed City of Austin allowed levels. In 2023 TxDOT completed its federally required two-year environmental review.

Brendan showed several aerial views of the highway today versus the plan, noting that the project will make I-35 about 100 feet wider in central Austin. He reviewed the Cap and Stitch Project, wherein TxDOT has agreed to build so that caps (coverings) for over 30 acres of I-35 can be constructed. As TxDOT funds will not cover this project, the City of Austin must come up with at least \$800 million by December 2024. (This amount would cover about 15 acres of caps.) The city has applied for a \$105 million federal grant and would match \$45 million of local money for the first phase. Meanwhile, Austin has been awarded a \$1.12 million federal grant for further study of caps.

Brendan reminded the group that at an earlier meeting, members were asked the following questions:

- How familiar are you with TxDOT plans for I-35 in central Austin?
- How familiar are you with NCINC?
- What do you think is the most important I-35 issue facing Hyde Park?
- Do you think HPNA should be involved in actions to mitigate the I-35 expansion?

Survey results showed a resounding “yes” to the fourth question.

Brendan suggested several possible issues for people to consider as this statement is developed.

Noting that one or more successful lawsuits will be required to significantly alter the plan, Brendan introduced Bobby Levinski, Staff Attorney with the Save Our Springs (SOS) Alliance. Bobby is working on two legal actions “to reset I-35 and heal Austin.”

### **The NEPA (National Environmental Policy Act) Suit**

Rethink35 and the SOS Alliance are the main plaintiffs, along with other environmental and social organizations.

There are four main aspects to the lawsuit:

1. Air quality (especially particulate matter): Austin is already out of compliance with new federal standards. In areas where civil rights are an issue (for example, disadvantaged areas), this must be taken into account; TxDOT has not done so.
2. Water quality: The storm water tunnel redirects flows for downtown through Boggy Creek to the lower Colorado River. This does not meet City of Austin standards of water quality. In addition, TxDOT has ignored wetlands and wildlife sanctuary areas.
3. Parkland: TxDOT should have identified land to be mitigated and found potential replacements; they did not.
4. Alternatives: Although organizations submitted alternative plans and suggestions, Bobby said TxDOT did not seriously consider any of them. They have not considered externally-generated options despite the fact that 75% of comments at the February public hearing opposed or expressed concerns about the plan. In addition, the plan does not take into account the induced demand that expansion will create.

### **The Civil Rights Act Complaint**

Background: In 1928 the City of Austin approved a comprehensive plan that created a “Negro District.” East Avenue (now I-35) was used as the official line for segregation, through redlining and other discriminatory practices.

I-35 was completed in 1962, a few years before the enactment of the Civil Rights Act and the National Environmental Policy Act. The construction of I-35 destroyed homes and businesses of Black, Latino, and indigenous residents. It also represented intentional discrimination.

Bobby explained that in situations with historic discrimination, organizations acting as a federal agency (as TxDOT is) are required to mitigate consequences. This has not been happening. Therefore, it can be argued that the I-35 expansion reinforces a pattern of discrimination.

The deadline for signing the form in support has passed.

### **How Can Individuals Help in this Effort?**

- Write to US Secretary of Transportation Pete Buttigieg as well as Austin City Council members. Zo Qadri is Hyde Park’s City Council representative.
- Donate to Rethink35 or SOS to cover the cost of ongoing education as well as the hiring of national-level counsel.

The presenters agreed that TxDOT needs to be accountable to someone. In the absence of that, they believe the US Department of Transportation should take over the project.

### **Questions and Comments**

Why didn’t NCINC join in either of these actions? Organizers realized it would take two to three months to get agreement on a position, thus delaying the actions. (Brendan mentioned that TxDOT is not speaking to counsel representing the actions.)

Karen McGraw asked whether results can be cited where city highways have been removed. Brendan said TxDOT uses the tools at its disposal to dismiss suggestions. Nevertheless, he still hopes alternatives can be explored.

Paul Smith asked what Hyde Parkers can expect between 2026 and 2031, when the project is predicted to directly affect the neighborhood. Brendan said that in reality there will almost certainly be earlier disruptions and noise. Residents might already be affected by the north and south segment construction underway now. TxDOT plans to start construction on the middle segment during late spring or early summer. Throughout construction, the plan is to keep some lanes open. Brendan observed that the closing of some current lanes will significantly worsen traffic jams and delays during the long construction period.

### **Discussion of Future Meeting Topics**

Kevin said the HPNA Steering Committee is eager to know what topics members would like to hear about in future monthly meetings.

Karen McGraw noted that the city is undoing the work preservationists have accomplished over several decades. Noting that the neighborhood has recently lost four contributing structures, Karen stated that little remains of the Preservation Program. She also cited a rumor that the city wants to eliminate conservation districts. In terms of future HPNA meetings, Karen would like to hear from city officials, such as Hyde Park’s Council Member Zo Qadri and the City Planner Director, about the city’s intentions with respect to historic districts.

**Continued on page 17**

**Rhianon Renae**  
 YOGA THERAPY • REIKI • ENERGY WORK



SCHEDULE AN APPOINTMENT  
 Call/text 512-300-8046 | rhianon747@gmail.com

**IAAT Certified**  
 YOGA THERAPIST

Reiki 2<sup>nd</sup> Degree

## Hyde Park Unsaved...

...cont'd from page 3

rezonings absent any meaningful conversation with affected residents.

After abolishing parking requirements and occupancy limits (which were key to halting 12-bedroom stealth dorms in the UT area) and allowing three units per lot via the H.O.M.E. ordinance, the latest attack on HPNA's work lets city inspectors permit extensive demolition of homes that are contributing structures to the Hyde Park Local Historic District, despite approval for only limited renovations by the Historic Landmark Commission. Such de facto demolitions have occurred at least four times in recent months.

Additionally, city contractors have installed extensive new sidewalks absent any concern for either city standards or the historic character of Hyde Park, resulting in curbside sidewalks, massive concrete corners, and illegal front yard parking. The city's latest effort (DB90 approved 2/29), encourages rezoning of commercial property, churches, and the Baker School (zoned Historic in recent years) to accommodate up to 30' greater height than the NCCD allowances of 30' to 60' if one is willing to provide a small percentage of affordable units. The city did not present this or discuss it with Hyde Park or other neighborhoods.

City Council's justification for turning its back on hard-fought neighborhood protections has been Austin's dire housing shortage. But in fact, Austin has a shortage of *affordable* housing – market rate housing is doing just fine, thank you – that these changes are required to produce. Moreover, the myopic view that blanket zoning is the blunt tool of choice insults Austin residents' intelligence and creativity.

Meanwhile, the mayor and several City Council members recently appeared as density champions at a recent Yimbytown conference at UT. Yet they appeared oblivious to the fact that developers of market-rate apartments are hitting the brakes on new projects now that the market is overbuilt and rents are dropping. Many fenced commercial lots now sit idle along North Lamar and Burnet Road.

Despite all this, the city is sure we need to sacrifice our neighborhoods in the name of density.

Perhaps fifty years of hard work and neighborhood-saving must come to an end sometime. Many veterans of these battles are simply tired. Will any of the neighborhood's relative newcomers have the interest and energy to take up the cause?

I hope you will and that you'll talk to your elected officials about these issues – before the next wave of bulldozers arrives.

– Karen McGraw

*You might be thinking this is the Pecan Press's annual April Fool's Day piece. Sadly, this time it's all true.*



**redbud  
tree service**

tree trimming • tree removal • raising canopy  
 • ISA certified arborists • fully insured •

**Philip Williams**      **Kieron Williams**  
 (512) 363-0741      (512) 300-6640

Family-owned and operated right here  
 in Hyde Park on the avenues of light.

• in umbra florimus •





---

## March Meeting Minutes...

...cont'd from page 15

---

Paul Smith suggested potlucks and other events to bring people together. He specifically mentioned activities where people of different ages can interact.

Kathy Jackson spoke to the goal to attract more people to meetings.

Kevin noted that Monday night meetings are a challenge for some members. He pointed out that other neighborhood associations hold meetings on Saturday; but that time creates difficulties for others, especially families with young children.

Chris Wooster suggested HPNA use some of the organization's financial resources to create a scholarship for neighborhood students.

Karen noted that in the years when houses were being torn down, attendance greatly increased.

Lorre Weidlich suggested inviting a tree expert to discuss issues of particular interest to Hyde Park homeowners.

### Update on Bunny Parade

Kevin went over the basics of the parade, which can be found on Page 1 of the March *Pecan Press* as well as the HPNA website. The parade takes place on Saturday, March 30, starting at 11 am. The parade will start and end at the Elisabet Ney Museum. After the parade, there will be refreshments and a raffle benefiting Hope Food Pantry.

### Announcements

Marsha Riti, who is the Ney's Landscape Educator, announced a new event series at the museum. She and her team are creating a monthly event called Naturalists at the Ney. At the first event, in April, the Ney will present a workshop in partnership with the Refugee Collective. Follow the museum on Instagram at @elisabetneyatx.

Chris Wooster reported that HPNA has been approached by Waymo, a division of Alphabet and Google that is developing self-driving cars. Though Waymo has employees in Austin, they have proposed an online meeting in hopes of reaching a wider audience. Company representatives would like to talk about how they want to operate in Austin generally and Hyde Park in particular. Feedback will be shared with Waymo decision-makers. Chris will set up a separate Zoom meeting. Please let him know if you're interested in attending: [chriswooster@gmail.com](mailto:chriswooster@gmail.com).

Lorre noted that the *Pecan Press* deadline is March 13.

Kevin announced that Representative Zo Qadri hopes to attend the April HPNA meeting; he was unable to attend this (March) meeting. Kevin also reminded members that the Steering Committee meets next Monday, in the Trinity Church's little chapel.



Marsha Riti, in her role as Vice-President of Sunshine Community Garden, announced that about 2,000 plants are left over from last Saturday's Annual Benefit Plant Sale. (Almost 4,000 people attended.) The Gardens still has tomatoes and spicy and sweet peppers left. Cost is \$3 per pot. Plants will be in the Gardens greenhouse; checks, cash, and Paypal are accepted.

Kevin adjourned the meeting at 8:16 p.m.

Submitted by – Katie Vignery  
HPNA Co-Secretary

---

## President's Letter...

...cont'd from page 2

---

Kristen Remeza is stepping down from her role as HPNA's Crime and Safety Chair. HPNA is very grateful for her long-time service in that role. She has done wonderful work to help make our neighborhood safer. Neighbor Andy Jones will step into the role of Chair, with Kristen remaining on the Crime and Safety Committee. That Committee could always use some new members. If you are interested, please let me know.

On March 2, Hyde Park witnessed another very successful It's My Park Day (IMPD). Friends and neighbors of all shapes and sizes showed up on a beautiful day to put new mulch around Ship Park's beautiful trees. This bi-annual event is organized and sponsored annually by a group of neighbors known as the Friends of Ship Park (FOSP): Jack and Jill Nokes, Lisa Harris, Adam Wilson, Madison Inselmann, Annette Patterson, Benjamin Lander, Betsy Clubine, Ellie N. Connell, Mark L. Fishman, Michael J. Bruns, Miranda Grieder, Suzee Brooks, Ann Bramlett, J.H. Moberg, Kelley Collier, Lindsay Barras, and Jade Walker. We owe the FOSP and all those who volunteered at IMPD a big Thank You! The next IMPD will be at Ship Park or at the Ney Museum in the fall.

I look forward to seeing you at the HPNA General Meeting on April 1.

– Kevin Heyburn  
HPNA President

---

## News from the Ney...

...cont'd from page 9

---

You can find out more about the Elisabet Ney Museum at the following locations:

Website: [austintexas.gov/ney](http://austintexas.gov/ney)

Website for the Friends of the Elisabet Ney: <https://www.theney.org/>

Instagram: @friendsofelisabetneymuseum

Facebook: @Elisabet Ney Museum and @Friends of Elisabet Ney Museum



# Hyde Park Fire Station

Former Hyde Park resident and former Texas State Artist George Boutwell emails A Painting Each Day! to his followers. On February 19, his daily painting was the Hyde Park Fire Station. To join his email list, contact him at [art@gboutwell.com](mailto:art@gboutwell.com). His painting, with his commentary, is reproduced below, with permission of the artist.

## "HYDE PARK FIRE STATION"



The Hyde Park Fire Station is located at 4301 Speedway in Austin's Hyde Park Neighborhood and was built in 1929. A threat to close this Station was met with a strong protest and led to the formation of the Hyde Park Neighborhood Association which became a leader in the Historic Preservation movement in Austin. We raised our children in Hyde Park so I just had to include this Station in my 2019 Texas Fire Station Calendar!

# Join Friends of Shipe Park...

...cont'd from page 11

is cared for and improved. It won't be long before our playscape will be in line for replacement; and if we remain strong, we can have some influence on the design and implementation of that important feature.

Volunteers are always needed for helping with special events, but we are also looking for more people to provide technical help with our WordPress website. We want to be more obviously inclusive, and having a robust social media presence is important. We need more hands to revise and update information on our website and Facebook page. New volunteers will be provided with content. We estimate this would require five hours a month. Neighbors like to learn from us when the pool will open, what's going on, and what to watch out for.

We meet informally at the park each first Sunday of the month to check in and discuss park issues and upcoming events. Please let us hear from you on our Facebook page or contact me directly at [jill@jillnokes.com](mailto:jill@jillnokes.com). Please join us!

— Jill Nokes

# New Neighbors at Hyde Park...

...cont'd from page 1

Austin's Development Review Department cleared the way rapidly through the red tape maze, adjusting the zoning and garnering buy-in from the Historic Landmark Commission. "When the stars line up," said a city council staffer, "the city can move very quickly."

Towery said the Pecan Place apartment complex, along with the apartment buildings being built in other city parks, would provide Austin with additional housing. "The sacrifice of our parks and their trees is a trivial matter compared to the need to house all of the newcomers to Austin," he stated. "City Council will no doubt provide other options for the growth of a tree canopy, playground equipment for children, and tennis and basketball courts." Towery reported that, in fact, similar projects across the country had led to increased appreciation on the part of residents for their neighborhood's history and character.

Towery was sure that the inhabitants of Pecan Place would welcome their residence in the Hyde Park neighborhood, where they can walk to neighborhood restaurants and retail businesses, pick up busses and trains, and enjoy viewing the vintage single- and two-story houses, many with yards and trees, that surrounded their apartment building. He expected the inhabitants to take an active role in the neighborhood, perhaps helping out with such neighborhood tasks as graffiti cleanup and roundabout maintenance.

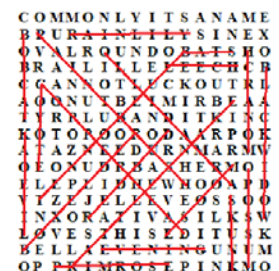
A groundbreaking ceremony will take place on the property in early June. Afterwards, the Development Review Department staff will be on hand to answer questions. Hyde Parkers will have an opportunity to sign up for the I Support Pecan Place program; in return for their support, they will have the privilege of using the remaining park area until additional housing is built on it.

— Rollo Treadway



## Word Find Answers from page 7

- ANSWERS: 1)BLUEBONNET;
- 2)LEECH; 3)LIVE OAK; 4)BATS;
- 5)BOX ELDER; 6)OPOSSUM;
- 7)MONARCH; 8)EVENING;
- 9)PRIMROSE; 10)PAINTBRUSH;
- 11)COYOTE; 12)REDBUD;
- 13)RATTLESNAKE; 14)BLACK WIDOW;
- 15)ARMADILLO;
- 16)RAIN LILY; 17)COPPERHEAD;
- 18)BOBCAT; 19)SKUNK;
- 20)MOOSE



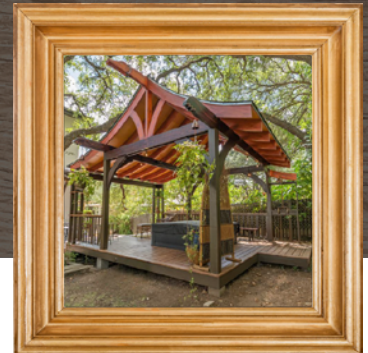
# Local



# HYDE PARK BUILDER

**CRAFTING MODERN  
CONVENIENCES INTO  
MID-CENTURY DESIGNS**

- Custom homes in Hyde Park & nearby areas
- Kitchen, bath & whole house remodels
- Hardwood floors, doors, desk & cabinetry
- Decks, porches, patios, pergolas & more



**0% FINANCING AVAILABLE!**

✉ [Info@CCHydePark.com](mailto:Info@CCHydePark.com)

📷 [@AustinCraftsmanCollection](https://www.instagram.com/AustinCraftsmanCollection)

☎ 512.337.6774



***JUST LISTED!***

**1950s Mid-century modern gem located in the beautiful Aldridge Place historic district at 203 West 32nd St. Two-story stone home with 3-4 BR, 3 BA, spacious living and dining rooms plus library/office. Attached one-car garage with workbench. Stone patios and private backyard. List price: \$1,850,000**



***SOLD!***

**Quintessential 1917 Craftsman bungalow located in the heart of Hyde Park's historic district. Main house features 3BR/2BA, spacious formal living and dining rooms. Detached guest house with 1BR/1BA plus oversized garage with workshop. Located at 4004 Avenue H. List price: \$1,400,000**

Contact Suzanne Pringle, your neighborhood expert, today for a complimentary market analysis and customized marketing plan for your property. Check out new listings for sale on **Instagram** @hydeparkrealtor.

**Suzanne Pringle**

Broker, REALTOR®

512.217.1047

suzanne.pringle@sothebysrealty.com



**Kuper**

**Sotheby's**  
INTERNATIONAL REALTY

