

# August Meeting

**When:** 7:00 pm  
Monday, August 1, 2016

**Where:** Griffin School  
5001 Evans Avenue

*Note: HPNA meetings usually take place on the first Monday of each month.*

## HPNA General Meeting Agenda for August 1

- Vote on Elisabet Ney Museum Support Letter
- Vote on Light Rail Resolution
- Update on the Redesign of Shipe Pool
- Announcements

**See You There!**

## Visit the ASH Campus

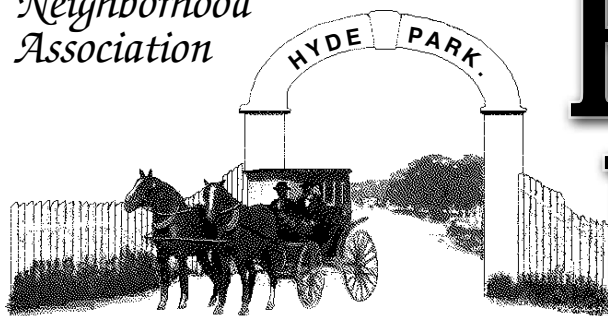
Many Hyde Parkers regularly use the ASH campus for exercise. Others have passed the gates for years without entering. With the ASH property under consideration for sale by the State of Texas, this is a good time to become more familiar with the site. In addition to its greenery and quiet surroundings, the campus contains buildings spanning over a hundred years. Whether you enjoy history or nature, it is worth a visit. Weekends are quietest, but the campus is open to visitors at any time.

The accompanying map identifies two public entrances (Guadalupe at 41st Street and 45th Street) with free parking (P) seven days a week.

Parking is also available at Central Park on Guadalupe and 39th Street.

The dotted lines on the map indicate an asphalt perimeter trail of 1.8 miles. The many campus roads

*The Hyde Park  
Neighborhood  
Association*



# Pecan Press

August 2016 • National Register District Neighborhood • Vol. 42, No. 8

## Exploring Hyde Park

### Shipe Park: The Heart and Soul of Hyde Park

The dog days of summer are here and many of us in and around Hyde Park head to Shipe Park to let the dogs have a run, keep the kiddos occupied on the playscape, and play basketball or tennis or take a dip in the beloved Shipe Pool. While the different uses of the park have changed throughout the decades, the joy and laughter that rings through the air remains the same. Many hands have come together over the years to sculpt the park into what we see today.

Beginning in 1891, Monroe Shipe marketed Hyde Park as a self-sufficient community with its own stores, churches, a streetcar, and unique gathering places like a racetrack and a dancing pavilion on a lake. The State Hospital, just across Guadalupe, provided a beautiful strolling garden under ancient oak trees; it was very popular with the new homeowners. Over time some of those things disappeared, and interest grew in a new park. It became a reality in 1928, when land on 45th Street was purchased for \$6500, with an additional \$3000 budget allocated for a "shelter house and fence." Landscape architect Jack Doubles designed the park; and architect Hugo Kuehne, who created the Department of Architecture at UT, designed the shelter house to be similar to those he designed for West Austin Park in Clarksville and Little Stacy Park in Travis Heights. Originally, it was called the North Austin Park, but it was soon renamed the Hyde Park Playground. In 1930, construction started on the wading pool, which was completed in 1933. Also in 1930, the handball court was replaced by a basketball court and the Civil Works Administration, a New Deal program, began construction on the shelter house, which became lovingly known as the "log cabin."

As the park began to take shape, residents flocked to the new site to play handball, stroll amongst the rose garden, play ball in the field, and enjoy dances, plays, and recitals in the breezeway of the log cabin. According to the Mayor of Hyde Park, Dorothy Richter, a small dam



Continued on page 11

Continued on page 17



As the temperature has increased this summer so has the number of activities and items of interest for the neighborhood.

First, the membership approved a resolution asking the City to consider maintaining the square footage of the pool. After the general meeting, the City of Austin held its fourth design workshop regarding the renovation of Shipe pool. At the meeting, the City continues to maintain that they will not increase the length of the pool but they did agree to expand the width such that the total surface area of the pool is approximately 85 to 90% of the current surface area. While both of us would be the first to admit that this is not ideal, it is a significant improvement. We must express our thanks to Adam Wilson and all of the Friends of Shipe Park for their advocacy on this particular issue.

At the meeting the city also noted that the renovations would necessitate the inclusion of restroom facilities, including accessible restrooms. These new facilities are estimated to be about 1400 square feet and result in reduced deck spaces, given the increased size of the pool. Furthermore, these facilities would only be available when the pool is open, which means despite the significantly improved and sizable structures they would be empty for almost 9 months of the year. At the forum, numerous neighbors ex-

pressed concern about the size and the limited availability of these facilities. The PARD staff agreed to continue to work to reduce the size of these facilities in favor of additional deck space. We will continue to work with PARD on this issue but it is likely that innovative solutions will be needed. We encourage all neighbors to share their opinions with the City about the changes to the pool.

While the Shipe pool design is nearing its final stages, several issues continue to be of interest for the neighborhood. First among them is ASH. The membership passed an amended version of the resolution published in this publication last month. This resolution has been forwarded to the HHS feasibility committee, as the comment period closed. This group is expected to release their report in the early fall, and we would continue to proactively monitor this situation. Just after the general meeting, we learned that the department of Health and Human Services is considering expanding the Winters facility to include more than 4000 offices and over 5000

Continued on page 6



## Monthly Calendar August

- 1 — HPNA General Meeting
- 4 — DRC Meeting
- 5 — Recycling Pickup
- 8 — HPNA Steering Committee Meeting
- 15 — Ice Cream Social
- 19 — Recycling Pickup
- 20 — Secret of the Kells at the Ney

## Hyde Park Neighborhood Association

P. O. Box 49427 • Austin, TX 78765  
www.austinhypark.org

— HPNA Officers & Steering Committee —

### Co-Presidents

- Kevin Heyburn ..... kmheyburn@gmail.com
- Reid Long ..... reid.long@gmail.com

### Co-Vice Presidents

- Kathy Lawrence ..... mail@kathylawrence.com
- Adrian Skinner ..... adrian.h.skinner@gmail.com

### Co-Secretaries • Artie Gold • Susan Marshall

### Co-Treasurers • PO Box 49427, Austin, TX 78765

- Mark Fishman ..... mlfishman@gmail.com
- Susanna Walker ..... suzwalkercpa@gmail.com

### Additional Steering Committee Members:

- Sharon Brown • Joan Burnham • Jessica Charbeneau • Betsy Clubine • Dorothy Richter • John Williams • Lorre Weidlich • Karin Wilkins •

— HPNA Committees & Task Forces —

### AISD • Anne Hebert, anne@annehebert.com

### Alley Coordinator • Carol Burton, sky2wash@austin.rr.com

### ASH (joint HPNA-CT committee) • John Williams, jawilli@grandecom.net

### Austin Neighborhoods Council Rep. •

### Beautification • Robin Burch, robinburch@gmail.com (903) 780-5275

### Church-Neighborhood Liaison • Kathy Lawrence, mail@kathylawrence.com

### CodeNEXT (joint HPNA-CT committee) • (unfilled)

### Crime & Safety • Carol Welder, cjwelder@msn.com • Kristen Remeza, kremeza@yahoo.com

### Development Review • David Conner, daypaycon@yahoo.com

### Finance • David Conner, daypaycon@yahoo.com

### Graffiti Patrol • Lisa Harris, ljharris@yahoo.com 420-0652

### Homes Tour • Carolyn Grimes, cgrimes@cbunited.com

### Membership • Sharon Brown, donsharon4213@sbcglobal.net • Karen Saadeh, kdmatthis@gmail.com

### Neighborhood Planning • Karen McGraw, mcgrawka@earthlink.net

### Neighborhood Outreach & Communications • Sharon Brown, donsharon4213@sbcglobal.net

### Parks & Public Space • Mark Fishman, mlfishman@gmail.com

### Social •

### Social Media Coordinator • Ellie Hanlon, ellie.hanlon@gmail.com

### Tree Preservation • John Walewski, jwalewski@civil.tamu.edu

### Website • Michael Crider, online@austinhypark.org

### Zoning • Dorothy Richter, 3901 Ave. G 452-5117

## Pecan Press

The Pecan Press is published monthly by the Hyde Park Neighborhood Association in Austin, Texas.

Advertising deadline: 15th of the month preceding publication.

Editorial deadline: 10th of the month preceding publication.

### Editor

Lorre Weidlich pecanpress@austinhypark.org

### Poetry Editor

Charlotte Herzele herzele@gmail.com

### Photo Editor

Lizzie Chen

### Puzzle Editor

Steve Bratteng

### Kid's Corner

Jessica Charbeneau ppkidscorner@yahoo.com

### Production Manager & Advertising Director

Robert M. Farr, 731-0617, bobfarr@austin.rr.com

### Payments for Ads

HPNA, P.O. Box 49427, Austin, TX 78765

### Distribution Coordinator

Rimas Remeza, 4105 Ave. F, 371-3158, rimasx@yahoo.com

### Area Coordinators

#### N of 45th/W of Duval

• Rosa Maria Lopez Reed ..... elsalvadorchrist@yahoo.com

#### N of 45th/E of Duval

• Jay Gerard & Carrie Laughlin ..... 371-1546

#### S of 45th/W of Speedway

• Joanna Fitzgerald ..... joannafitzgerald@icloud.com

#### S of 45th/E of Speedway

• Martha Campbell ..... 452-2815



# Resolution for Vote at the August Meeting

WHEREAS the population of Austin has grown dramatically in recent years, and the increased size of the population of Austin necessitates that additional options for public transportation in general become available, AND

WHEREAS, specifically, the State of Texas has announced the construction of a new office complex around the Winters Building on 51st Street, which will lead to an increased need for transportation to and from that area, which will significantly increase automobile traffic through our neighborhood, AND

WHEREAS the Central Austin Community Development Corporation (CACDC) has proposed the construction of a light rail system on the Lamar-Guadalupe corridor, AND

WHEREAS the Hyde Park Neighborhood Plan, adopted by the City of Austin, supports a light rail system on that corridor and requests that all stakeholders be involved in the planning process,

THEREFORE, be it resolved that the Hyde Park Neighborhood Association requests that Austin City Council include on the November, 2016 election ballot a bond proposal for the construction of a light rail system on the Lamar-Guadalupe corridor as proposed by CACDC.



## Membership Information

- Membership in HPNA is open to all residents 18 years or older residing within the boundaries of Hyde Park or within 300 feet of its boundaries.
- All memberships expire on September 30th of each year.
- New members and members who lapse in dues for over six months are eligible to vote at HPNA meetings 30 days after receipt of dues.
- Membership dues can be paid in several ways: By signing up at an HPNA meeting or event, by mailing in the membership form, or by joining online using PayPal. To pay online, go to [www.austinyhydepark.org](http://www.austinyhydepark.org) and click on the Join Now button. Dues paid online are \$6.

## Submission Information

- Send your articles, letters, and photos by the 10th of each month to Lorre Weidlich at [lweidlich@grandecom.net](mailto:lweidlich@grandecom.net).  
*Opinion articles & letters to the editor must not exceed 500 words.*
- Send your poems to Charlotte Herzele at [herzele@gmail.com](mailto:herzele@gmail.com).  
*All poems, even if written under a pen name, must include a name and contact information for identification and verification purposes.*
- Send your contributions to Kid's Corner to Jessica Charbeneau at [ppkidscorner@yahoo.com](mailto:ppkidscorner@yahoo.com).

## Hyde Park Neighborhood Association Membership Form

Name \_\_\_\_\_ Phone \_\_\_\_\_

Address \_\_\_\_\_

Notify me by email of HPNA meetings & events \_\_\_\_\_

Dues  Standard - \$5/yr.  Check  
 Senior - \$1/yr.  Cash  
 New Member Date \_\_\_\_\_  
 Renewing Member Amount \_\_\_\_\_

Mailing Address:  
 HPNA Membership  
 P.O. Box 49427  
 Austin, Texas 78765  
 Make checks payable to HPNA.



# THE HYDE PARK SPECIALIST

*and Resident*

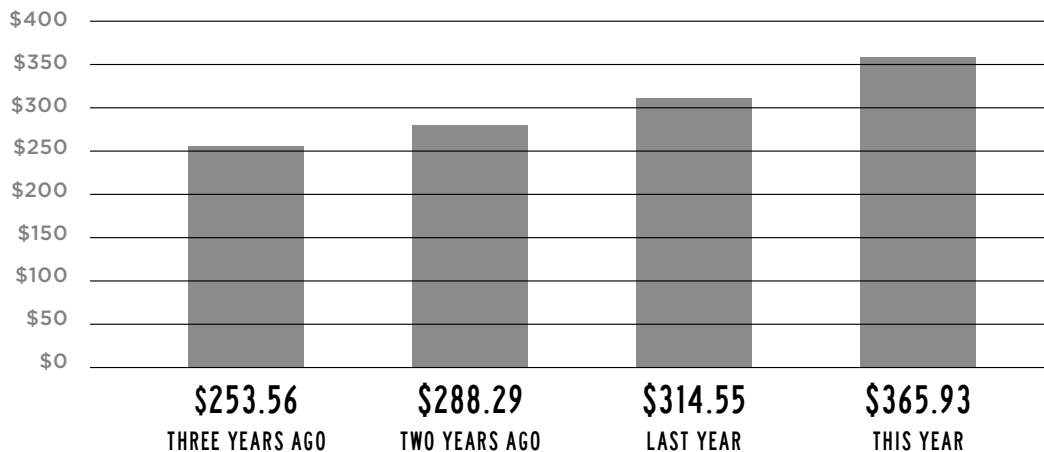
## SAM ARCHER

Until the 1880's, the Texas State Fair took place in Hyde Park. More than a century later, that same historic section of the city is once again attracting crowds as one of the most in-demand neighborhoods in all of Austin. I have lived in Hyde Park for 20 years and witnessed the area transform into a beautiful community that has seen a sweeping boost in property values and quality of life over the past decade. Whether you're looking to buy or sell a house here, my expertise and experience regarding the rich history of the homes in this classic Austin neighborhood will help ease the stress of the realty process. Contact me if you have questions or need any help planning your move.

Certified Negotiation Expert®

HELPING CLIENTS BUY & SELL IN AUSTIN WITH INTEGRITY & UNPARALLELED REPRESENTATION

## HYDE PARK SOLD PRICE PER SF



*\*YTD Numbers from the MLS for Single Family Residences taken 09/01/2015  
For detailed market information about your home, contact Sam Archer, Broker.*



512.633.4650

SAM@ARCHERAUSTIN.COM

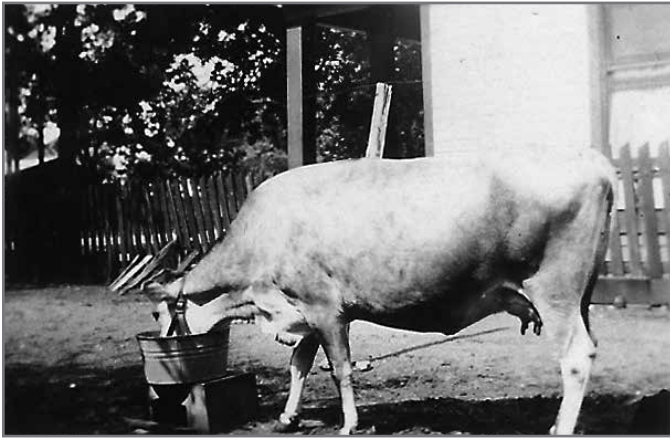
JUICEHOMES.COM

# Around & About the Avenues

**A Tip to Control Mosquitoes.** In Austin summers, mosquitoes are a constant problem. Hyde Parker Steve Bratteng passes on the following tip: "A recent A/C outage revealed a hidden source of mosquito habitat. In central units in which the fan blows upward, rain and debris can enter and collect in the bottom of the unit. When I saw the unit without the casing, it looked like a swamp in there. I suggest adding something to make this wetland less hospitable for the mosquitoes."



**From Hyde Park History.** William Thomas Adams, III passed on this photo from the time that his grandparents owned the Adams House, now a well-known Hyde Park B&B.



"I thought your readers might enjoy this photo from the 1920s. I am one of the descendants of the Adams family that owned the home (from 1921 to 1955) that is now the Adams House B&B at 43rd and Avenue G. This picture shows my grandparents' cow in the back of the Adams house about where the carport driveway is now, with the house that (still) faces 43rd in the background. I believe it was common during this era for folks to have their own cow for fresh milk. My grandparents bought the house in 1921, so this is probably shortly after that.

The Adams family is very grateful to the Locke family for all they have done to save this house as a great B&B and allow all our extended family to be able to visit. My two sisters and I all lived in this house at some point.

Thanks, Tom"



**An Update about One Two East.** The HPNA received word about the resolution of this issue.

"Today representatives of the Organization of Central East Austin Neighborhoods and Robertson Hill Neighborhood Association received a notice the owner of One Two East property has elected to withdraw the pending zoning case and will develop the site in accordance with existing entitlements.

Until the site plan is filed with the City of Austin, we will not know what exactly will be built, only that it will be built under current allowable height and FAR restrictions.

We are profoundly grateful to all the neighborhood associations, community groups, and individuals that brought attention to the big picture issues at stake in this case and for standing up for the concerns of Central East neighborhoods! Best, Tracy Witte and Eric Standridge"



**An Update about Shipe Pool Redesign.** On Thursday, July 14, the Shipe Pool Design Team held a specially scheduled meeting in response to the concerns expressed by pool users at the previous meeting. After reviewing the parameters of the project and the results of their survey (418 participants from nine neighborhoods responded), the team introduced a new design. City of Austin pool standards dictate a 75' long pool, but the Design Team tried to address neighborhood concerns by expanding the width of the pool. In the new design, the width of the pool was expanded by 8 feet, in a tradeoff of deck space for water area. The progress of the project will entail additional meetings, for example, at the Historic Landmark Commission. Watch the *Pecan Press* and the neighborhood listserv for notice.



**Oops! Department.** On page 17 of the June, 2016 issue of the *Pecan Press*, we incorrectly identified the creek as Shoal Creek. That should have been Waller Creek. We apologize for the error.



Proprietors:  
Patricia Mares  
Luke Zimmermann

Open 11 am till midnight  
Seven days a week

Catering  
Dine In  
Take Out  
Delivery

29th & Guadalupe  
477-1651

# RUBY'S B·B·Q

## PAW PAUSE

Full Service Pet Staycations

Dolly Ensey  
Certified Treat Dispenser

Tail Wag Ratings Available

512.553.6729 pawpausepets@gmail.com



## Soft Touch - High Tech Dentistry

Francys Day DDS



WWW.AUSTINMILESBYDAY.COM • 512-452-4495

1301 W 38th St, Suite 708 • Austin, TX 78705  
(Located in Medical Park Tower, next to Seton Shoal Creek Hospital)

### Accepting New Patients

**NEW PATIENT SPECIAL**  
Includes New Patient Exam, Full  
Series of X-Rays, and  
Oral Cancer Screening.

\*New patients only. Must mention this  
ad to receive this special.

**JUST  
\$98**

## Join Us at Our New Location



# MIDTOWN

CHURCH

a church of central austinites  
for central austinites

3908 AVENUE B  
MEETS IN BAKER SCHOOL IN HYDE PARK  
SERVICE TIME: SUNDAYS @ 10:45AM  
WWW.MIDTOWNAUSTIN.ORG

LOVE | SERVE | AUSTIN

## Co-Presidents' Desk...

...cont'd from page 2

parking spaces. Obviously this large facility will represent a significant change for the neighborhood and could have significant impacts on flooding and traffic for neighbors in the Guadalupe area of our neighborhood. We will continue to monitor this situation and outreach with the state regarding the plans to try to mitigate the possible impact on the neighborhood.

Finally, given all of this activity along the Guadalupe corridor and the recent debate regarding placing transportation bonds on the November ballot, the possibility of putting a light rail line along Guadalupe has again arisen. Austin desperately needs new and improved transportation systems to address what is widely considered one of the most congested road systems in the country. While we make no specific recommendation regarding any specific plan at this time, it is important for everyone to consider innovative solutions. We hope to facilitate a dialogue regarding these issues in the coming months at our general meeting.

And these are only a few of the issues facing the neighborhood. We are still monitoring the possible sale of the Baker School, changes and renovations to IH-35, changes at the Duval Center, CodeNext, speed limits within the neighborhood, and flooding issues. One of our goals is to involve as many people in these discussions as possible. We will begin to set up committees for each of these tasks. Please let us know if you have an interest in any of these topics. Given all of the important items for discussion, we are currently (as of our publication date) planning to hold an August meeting to conduct business as well as to hold our annual ice cream social. We hope that you can join us for both of these events.

— Kevin Heyburn & Reid Long  
HPNA Co-Presidents



**Open hearts.  
Open minds.  
Open doors.  
No exceptions.**

4001 Speedway | 459.5835 | tumc.org | info@tumc.org

# News from the Ney

August will be hot but cool at the Ney this year! The very popular semi-annual Drawing Salon series will be offered again, and like its Winter iteration, will take place at the Ney on Saturday mornings from 10 to noon. At the Drawing Salons, visitors have the opportunity to come in and draw Elisabet's sculptures with free professional assistance and instruction. All tools - paper, pencils, charcoal, chalk, drawing boards, and more - will be provided by the Museum free of charge. Each Saturday morning the Salon will feature a different medium or unique challenge. Come explore Elisabet's work and castle with a pencil and paper!

On Saturday August 20, the Ney will be screening *Secret of the Kells* (Directed by Tomm Moore and Nora Twomey, 2005, France), a magical tale of the impact a mysterious illuminator has on a lonely young boy in a Medieval village. This spellbinding and visually stunning movie is appropriate for all ages and is filmed in English. Austin's beloved film education curator Chale Nafus, formerly of the Austin Film Society, will make introductory remarks about the film before the screening. Bring a blanket and a picnic basket as the screening will be held outside, on the grounds of the Ney, making for an enchanting evening for all ages. Lemonade will be served. The show will start at 8 pm.

*Secret of the Kells* at the Ney is part of the Planet Cinema series, this year featuring screenings of GKids Films, a remarkable collection of animations by filmmakers trained by the famed Studio Ghibli,

shown at several of the Ney's sister sites within the City of Austin's Parks and Recreation Department. For more information on the Planet Cinema series overall, please visit [www.austintexas.gov/department/events/288](http://www.austintexas.gov/department/events/288).

As always, all programming at the Ney is free of charge.

## Mark your calendars for the fall:

- Sunday September 18 - Portraiture in the Park: Who Are You Anyway?
- Sunday October 30 - The Third First Annual POL-KAPOCALYPSE!

And more to come.

Take care and have a great August!

# gusto

italian kitchen + wine bar

4800 BURNET ROAD  
512.458.1100  
[gustoitaliankitchen.com](http://gustoitaliankitchen.com)

Bring this ad in for a complimentary pizza, pasta, panini, or entree with the purchase of another of equal or greater value.

## it's on us

Limit one per table. Not good with any other offer.  
Expires 8.31.16.



LUNCH  
mon-fri 11-4

HAPPY HOUR  
daily 4-7

DINNER  
sun-thur 4-10  
fri-sat 4-10:30

BRUNCH  
sun 10-3

**Jim-Dandy, Inc.**  
  
 Home Improvement  
 Remodeling  
 Repair  
 And Handyman Services

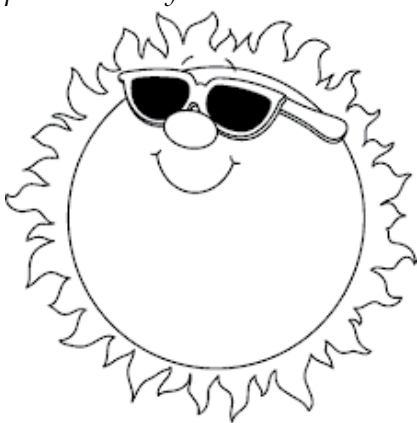
"No job too small"

**Jim Cardwell**  
 jim-dandyinc.com

**(512) 422-9606**

# Kid's Corner: What did you do this summer?

Welcome to the Pecan Press Kid's Corner where you can find out about kid happenings in Hyde Park. Feel free to submit anything kid related, including event info, kid's drawings, stories, comics, songs, poems, what have you!  
 ppkidscorner@yahoo.com



**Austin Tree Experts**  
  
 Locally owned by  
 Keith Brown  
 Board Certified Master Arborist

Pruning | Removal  
 Treatment Programs  
 Consultation

**996-9100**  
 www.AustinTreeExperts.com

**HYDE PARK**

**Conans PIZZA** since 1976!  
 Austin's Original Deep Pan  
 603 W 29th @ Guadalupe

**\$3 OFF ANY LARGE**  
 (must present this coupon)  
 Exclusive offer for our  
**HYDE PARK NEIGHBORS**

**(512) 478-5712**

**Local Spoken Here**  
 Austin Independent Business Alliance

Help your kiddo answer the inevitable  
 back to school question: "What did you  
 do over summer vacation?" While you're at  
 it, what is still on your Summer 2016 Bucket  
 List? Quick, AISD goes back to school on  
 August 22nd!

1. \_\_\_\_\_
2. \_\_\_\_\_
3. \_\_\_\_\_
4. \_\_\_\_\_
5. \_\_\_\_\_

What is still on your Summer 2016 Bucket List?  
 \_\_\_\_\_

A vibrant and engaged high school community

**GRIFFIN SCHOOL**  
  
 Cultivating individual potential  
 and intellectual curiosity  
 www.griffinschool.org



## Word Find: Poets

P O E T S D O I T I N R H Y M E  
 N M A Y A A N G E L O U I S E L  
 O A U S W B R O W N I N G L U E  
 R R K H O O T T H E S E I R A Q  
 Y K E Y A T R E E H U R T L I E  
 B H A E Z M N D A N E S L Y G K  
 D A T A C A M K S H N E E D N A  
 R Y S S L U E A G W N Y I N N L  
 O Y O Y E S M I D G O R S N O B  
 L A D Y P L L M I A E R S O S M  
 A M M E P A I N I L L A T I N A  
 U S A G E S S O O N V I A H I I  
 D R A T U B A C T I G G E R K L  
 E X N Y E L L E H S I S Y N C L  
 N A A R I S T O P H A N E S I I  
 D O G D E N N A S H E R A L D W

(The numbers in parentheses refer to the number of letters in the answers.)

1. Inferno (5, 8) \_\_\_\_\_
2. Also wrote of a caged bird. (4, 7) \_\_\_\_\_
3. First or last; Thomas or Bob. (5) \_\_\_\_\_
4. "Liquor is quicker" (5, 4) \_\_\_\_\_
5. How! (5, 8) \_\_\_\_\_
6. Had trouble spelling "tiger?" (7, 5) \_\_\_\_\_
7. Wrote on a grecian urn? (5) \_\_\_\_\_
8. WH(o) wrote Age of Anxiety. (5) \_\_\_\_\_
9. One poem like a bird hanging from his neck? (9) \_\_\_\_\_
10. Had an aversion to the UPPER CASE? (1, 1, 8) \_\_\_\_\_
11. Bunch of sonnets and some other stuff. (11) \_\_\_\_\_
12. Fightin' and rhymin' in the ring. (8, 3) \_\_\_\_\_
13. With #9, helped launch romantic age. (10) \_\_\_\_\_
14. Ada Lovelace's dad: a real Don Juan? (4, 5) \_\_\_\_\_
15. Gave us CATS! (1, 1, 5) \_\_\_\_\_
16. Memorialized the 600. (8) \_\_\_\_\_
17. He wrote to a skylark; she, re: a modern Prometheus. (7) \_\_\_\_\_
18. Mainly known for Attic comedy. (12) \_\_\_\_\_
19. Irish mystic and Nobel laureate. (5) \_\_\_\_\_
20. Happy with bread, wine, and one more thing. (4, 7) \_\_\_\_\_
21. Mostly unpublished until after her death. (9) \_\_\_\_\_
22. Famous His and Her poets. (8) \_\_\_\_\_

Answers on page 13



**Local CONNECTION!**

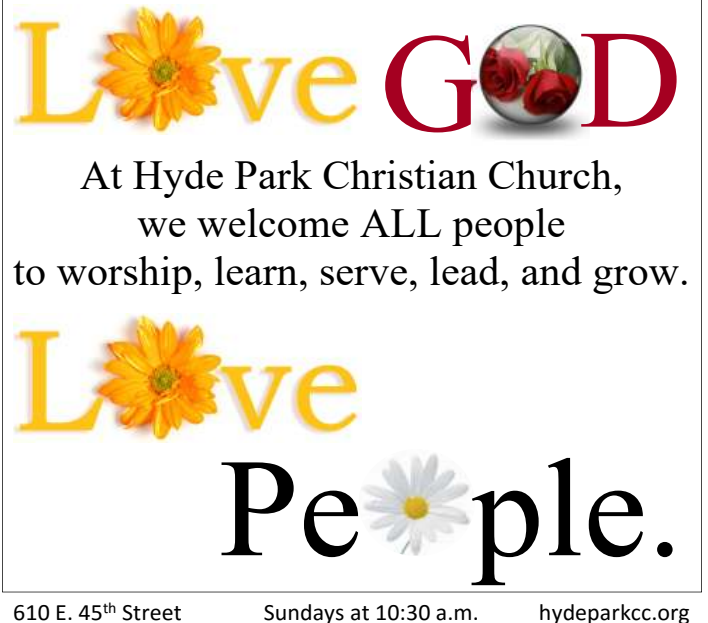
**BEST OF AUSTIN 2015**  
 VOTED Best NEIGHBORHOOD GROCERY STORE

3101 GUADALUPE 4001 S. LAMAR  
 512-478-2667 512-814-2888

**WHEATSVILLE FOOD CO-OP**

OPEN DAILY: 7:30 AM - 11 PM  
 WWW.WHEATSVILLE.COM

URBAN ROOTS FARM  
 6 MILES FROM WHEATSVILLE



**Love GOD**

At Hyde Park Christian Church,  
 we welcome ALL people  
 to worship, learn, serve, lead, and grow.

**Love People.**

610 E. 45<sup>th</sup> Street      Sundays at 10:30 a.m.      hydeparkcc.org



**4001 DUVAL HAIR SALON**  
*An Aveda Concept Salon*

**FULL SERVICE SALON & ART GALLERY**

**AVEDA**  
THE ART AND SCIENCE OF PURE FLOWER AND PLANT ESSENCES

**4001 DUVAL STREET 512.451.4034**

# The Arts in Hyde Park

## Hyde Park Theater

### *Hand to God*

August 18 – September 17, 2016

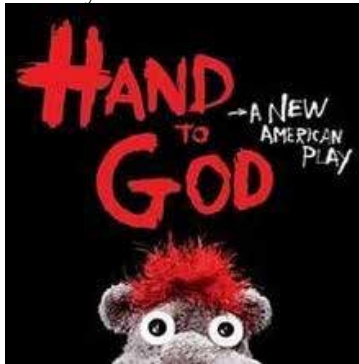
Thursday – Saturday at 8 pm

Hyde Park Theatre

511 W. 43 Street

For tickets go to [www.capitalt.org](http://www.capitalt.org)

**P**ecan Press readers who follow popular culture know that *Hamilton* was this year's smash hit on Broadway. *Hamilton* is a multi-award winning musical about one of America's more interesting founding fathers. For those readers who can't spare \$2,000 for tickets to see *Hamilton* in New York, the next best option is wait to see the travelling version of *Hamilton* when it comes to Austin.



However, if you live in Hyde Park and want to see a show direct from Broadway, without having to do anything more than take a short stroll through the neighborhood and pay a reasonable ticket price, you are in luck. This month, *Hand to God*, one of the most talked-about Broadway plays of 2015, will be appearing at Hyde Park Theater (HPT). HPT is one of only two theatrical venues in the United States where the play will be appearing since it left Broadway.

It's fitting that a Texas theater company is among the first to produce *Hand to God*, as the play is set in a small town in Texas, albeit a small town with an unusual problem. The play's strange plot centers on Jason, a member of the church youth group, who has had his left hand hijacked by a rogue sock puppet named Tyrone. This predicament causes all Hell to break loose, and there is nothing Jason's classmates, his mother, or their pastor can do about it. Yes, I know. Some of you might be thinking, "Oh no! Not another New York play making fun of the Bible Belt and Texas, but this time, they have added a sock puppet." Well, this play might not be for everyone. However, you should be aware that when *Hand to God* was on Broadway, it was nominated for five Tony Awards, including Best New Play. Variety's critic thought *Hand to God* was "Furiously funny..." and the New York Times hailed it as "flat-out hilarious." Furthermore, *Hand to God's* playwright, Robert Askins, knows something of what he writes, as he was born and raised in Cypress, Texas. He is not just some Yankee trying to make fun of us, y'all.

*Hand to God* is directed by Mark Pickell, one of

Austin's best directors, and will be produced by Capital T Theatre, Mr. Pickell's theatrical company. Over the past 10 years, Capital T has presented award-winning, provocative, and moving plays and has featured some of the best actors in town. And while the plays Mr. Pickell directs are almost always very funny comedies, his shows often take on tough moral questions about the existence of evil, the power of love, the boundaries of trust, and the reality of forgiveness. *Hand to God* is one of those kinds of comedies. And Capitol T's attention to detail is always remarkable. Every Capital T show I have seen has had beautiful sets and excellent sound and light design. So while I don't know whether you will like *Hand to God*, I can say you will not forget that you saw it.

### *The Flick*

July 7 – August 8, 2016

Thursday – Saturday at 8 pm

Hyde Park Theatre

511 W. 43 Street

For tickets go to [www.hydeparktheatre.org](http://www.hydeparktheatre.org)

**D**epending on when you get your issue of the *Pecan Press*, you might have an opportunity to see Hyde Park Theatre's (HPT) production of *The Flick* by Annie Baker. Winner of the 2014 Pulitzer Prize, *The*



*Flick* is the moving story of three young movie-theater workers. The New York Times critic called the play "a work of art so strange and fresh... infinitely touching." HPT has done something unusual with this production. Since *The Flick* is about theater workers, the play's action will take place in and around the fixed seats where HPT's audience usually sits. *The Flick's* audience will be seated on the stage.

HPT has already produced three of Annie Baker's plays: *The Aliens*, *Circle Mirror Transformation*, and *Body Awareness*, all hugely popular with Austin's audiences and critics.

– Kevin Heyburn

# Visit the ASH Campus... ...cont'd from page 1

and sidewalks invite visitors to customize their own route. Four gates on the south side of campus provide entry to Central Park's dirt trail, which is a loop of about a half mile (and passes near the Central Market Café, a convenient refreshment stop.)

Campus buildings in current use are darkened on the map. The large square structures are patient residences, typically built around interior courtyards. These are relatively recent constructions, mostly from the 1960s and '70s. Other buildings contain offices, laboratories, maintenance shops, and storage facilities.

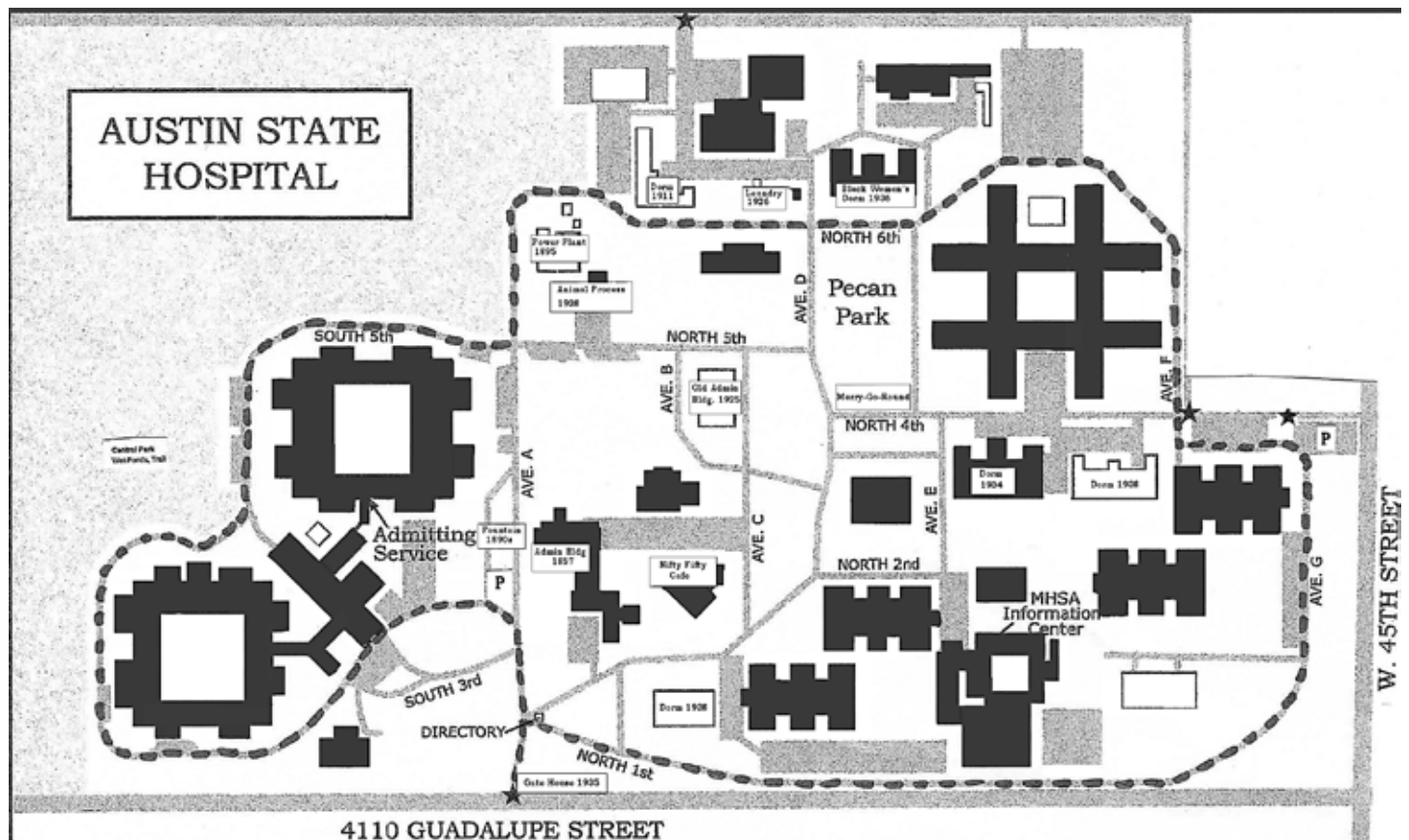
Preservation Texas has identified several historical structures of interest. These are listed on the map with the date of construction and their original function. Some of the buildings can be viewed from the perimeter loop trail, but all are easily accessible for close-up inspection. The most well-known campus structure is the Administration Building, built in 1857. All its wings were added in phases and the front portico is a 1904 addition. Many of the surviving older buildings date from the 1930s, and were probably Depression work projects. None of these older dorms are used as residences today; they are either vacant or repurposed for offices or storage. One of the surviving dorms is a reminder of the era of racial segregation. Other buildings are testimony to the self-sufficient community that ASH achieved for the first century of its existence. For instance, the former animal process-

ing plant is now the laundry. According to Hyde Park author Sarah Sitton, a sewing room staffed by female patients produced most of the residents' clothing well into the twentieth century.

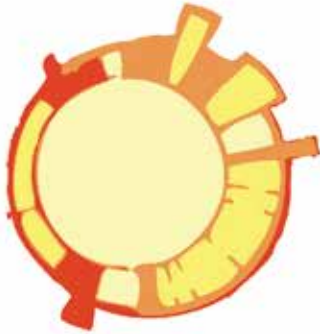
As you walk the campus, remember that as recently as the 1960s ASH housed about three thousand residents; in the following decade, the deinstitutionalization movement reduced dramatically the numbers housed in mental health facilities. Today ASH operates primarily as an acute psychiatric care facility, admitting about 4000 patients a year. On a given day, about 300 juvenile and adult patients are in residence. Current and former patients receive support from at least ten mental-health organizations based on campus; they work to ease the transition into the community by providing referrals to alcohol and drug treatment services, outpatient psychiatric clinics, employment counseling and placement, and guardianship for minors.

For small children, the Pecan Park merry-go-round is a fun stop. For older folks, the park has a pair of gliders that beg for some lemonade and a good book. The nearby Nifty Fifty (behind the Administration Building) sells refreshments. To learn more about ASH, read Sarah Sitton's book, *Life at the Texas State Lunatic Asylum, 1857-1997* (available for loan at the Austin Public Library or for purchase on Amazon).

— Susan Marshall







Sunny Day  
REAL ESTATE  
Austin, TX



Broker:

**J. Reed Henderson**

cell: (512) 743-6298

reed@sunnydayaustin.com

Agent:

**Regina Henderson**

cell: (512) 924-4456

regina@sunnydayaustin.com

*We are here to help with all of your real estate needs!*

WE WORK  
FOR PEOPLE,  
NOT DEALS.

COMMITTED TO HYDE PARK SINCE 2000

HOMESVILLE.COM

**HOMESVILLE**

REAL ESTATE



**JEN BERBAS**

512.300.2995

jen@homesville.com

# Nominations are Open for the HPNA Steering Committee

Our neighborhood is very fortunate to have a group of committed people who are dedicated to maintaining a positive culture and environment in the Hyde Park community. The folks who are serving as officers and at-large members of the HPNA Steering Committee facilitate dialogue and discussion about the important issues facing the neighborhood, and they advocate for our community in many different forums. Most of all, they work hard to set a positive standard for civil discourse – living and working together as a diverse community with respect for all community members and especially those with whom we do not agree.

This summer, the HPNA Nominating Committee is working to build a slate of excellent Steering Committee members for the upcoming term, which begins at the Fire Station Festival in October. The slate of candidates for the Steering Committee will be announced at the HPNA September 5 General Meeting and voted upon at the October 3 General Meeting. Any neighbor who would like to be considered for a seat on the Steering Committee should contact John Williams ([jawilli@grandecom.net](mailto:jawilli@grandecom.net)) or Adam Wilson ([adam@grif-finschool.org](mailto:adam@grif-finschool.org)) as soon as possible. People who have a passion for community building are particularly encouraged to apply. We deeply appreciate interest from neighbors who would like to get involved in the fulfilling work of leading this community!

– Respectfully,  
 HPNA Nominating Committee  
 Adam Wilson, John Williams, Kathy Lawrence, Kevin Heyburn

## Word Find: Poets Answers

P O E T S D O I T I N R H Y M E  
 N M A Y A A N G E L O U I S E L  
 O A N S W B R O W N I N G L U E  
 R R K H O O T T H E S E I R A Q  
 Y K E Y A T R E E H U R T L I E  
 B H A E Z M N D A N E S L Y G K  
 D A T A C A M K S H N E E D N A  
 R Y S S L U E A G W X Y I N N I  
 O Y O Y E S M I D G O R S N O B  
 L A D Y P L L M I A E R S O S M  
 A M M E P A N Y L L A T I N A  
 U S A G E S S O O N V I A H I I  
 D R A T U B A C F I G G E R K L  
 E X N Y E L L E H S I S T N C L  
 N A A R I S T O P H A N E S I I  
 D O G D E N N A S H E R A L D W

- 1) DANTE ALIGHIERI; 2) MAYA ANGELOU; 3) DYLAN; 4) OGDEN NASH; 5) ALLEN GINSBERG; 6) WILLIAM BLAKE; 7) KEATS; 8) AUDEN; 9) COLERIDGE; 10) EE CUMMINGS; 11) SHAKESPEARE; 12) MUHAMMAD ALI; 13) WORDSWORTH; 14) LORD BYRON; 15) TS ELIOT; 16) TENNYSON; 17) SHELLEY; 18) ARISTOPHANES; 19) YEATS; 20) OMAR KHAYYAM; 21) DICKINSON; 22) BROWNING

**GREAT AFTER SCHOOL PROGRAM**

**SUMMER SPECIAL**

**1-MONTH \$69 INCLUDES UNIFORM**

**MAX TAEKWONDO**

Summer Camp (No Experience Needed)  
 Ages 3-99 (Specific Classes For Each Age Group)  
 Yoga Available For Parents During Classes  
 Develop Self Discipline, Respect and Self Esteem  
 Increase Flexibility and Coordination  
 Instill Self-Respect and Respect For Others  
 Develop Better Focus and Concentration  
 AISD OCPE and Home-School Classes Available

**MAX MARTIAL ARTS ACADEMY**

6929 Airport Blvd. Suite 146  
 (Corner of Airport & Lamar)  
 Austin, Texas 78752  
 512-371-8989 • [maxtkdoyoga.com](http://maxtkdoyoga.com)  
 VETERAN OWNED

**BIRDS BARBERSHOP**

**i austin**

glenn, in focus  
 shortcut, \$24

photo by alison nairo

for locations and stylist schedules, visit [birdsbarbershop.com](http://birdsbarbershop.com)





"Smart Decisions About Serious Money"

Serving Hyde Park for 24 Years

Did you know that we are available to speak to your professional group, office, or organization?



Some of our most popular topics include:

"College, Credit Cards, & Cutting the Cord—The thinking parents guide to managing your kids through college"

"Teaching Your Kids / Grandkids About Money"

"Leaving a Lasting Legacy"

Contact us at 512-458-2517 if you are interested in scheduling one of our talented speakers for an upcoming event!

[www.lsggroup.com](http://www.lsggroup.com)

A Registered Investment Advisor Providing Fiduciary Level Planning, Advice & Asset Management Services

## Hyde Park Neighbors –

Biggs Plumbing, a commercial contractor for over 40 years, is now providing residential service.

Consider us for your:

- Kitchen and bath remodeling
- New tankless water heaters
- Service calls

We live in the neighborhood and understand the challenges of older plumbing. Let us help you with your next project.

512-837-5955

[service@biggsplumbing.com](mailto:service@biggsplumbing.com)

<http://www.biggsplumbing.com>



TX Masters License M36811

# HPNA General Meeting Minutes: July 11, 2016

The meeting was called to order at 7:08 pm by Co-President Kevin Heyburn at the Griffin School, 5001 Evans Avenue.

The meeting began with an announcement by Carolyn Grimes concerning this fall's Hyde Park Homes Tour. The tentative theme is "Forty, Funky, and Fabulous." The Homes Tour committee is currently in the process of identifying homes fitting that category. The tour always needs volunteers, and future announcements will follow.

The first agenda item was the Shipe Pool renovation. The speaker was Kimberly McNeeley of the Austin Parks and Recreation Department. She explained the design process in detail, emphasizing the department's use of public feedback. She reiterated the input from the previous public meeting that neighbors strongly opposed a reduction of pool surface size and promised that a new pool design will be presented at the upcoming meeting on July 14. She also stated that the design team is looking at opportunities for zoning variances in response to neighbors' feedback. She then invited audience questions, which addressed primarily restrooms, fixture code requirements, and access.

The second agenda item was the Shipe Pool resolution. There was no discussion. The resolution passed with 25 in favor, none opposed, and no abstentions. It states the following:

*WHEREAS a high volume of swimmers uses the Shipe Pool Facility, and the Shipe Pool Facility is popular with families from all over the City of Austin;*

*THEREFORE, be it resolved that the Hyde Park Neighborhood Association opposes any reduction in the surface areas of either the recreation/lap pool at the Shipe Pool Facility or the associated children's activity pool and requests that the surface area of each pool not be reduced in any new proposed pool design.*

The third agenda item was the vote to confirm a new HPNA co-Treasurer to fill the vacancy left by the passing of I. Jay Aarons. The Nominating Committee recommended Suzanna Walker, University of Texas MBA and practicing CPA. The vote to confirm was 28 in favor, none opposed, and no abstentions.

The fourth agenda item was the resolution on the Austin State Hospital. After much discussion, an amendment was added. The resolution passed with 24 in favor, 3 opposed, and no abstentions. The final resolution reads as follows:

*WHEREAS the Austin State Hospital (ASH) is of unique historic importance to the State of Texas as the oldest continuously operating mental health facility west of the Mississippi River; AND*

*WHEREAS the ASH Administration building, constructed in 1857, is listed on the National Register of Historic Places; AND*

**Continued on following page**



WHEREAS ASH and the Hyde Park neighborhood have enjoyed over 100 years of a mutually beneficial relationship as a source of employment and recreational space; AND

WHEREAS the ASH campus is in close proximity to the urban core, with ample access to public transportation, and is ideally located to continue serving patient needs in accordance with their original charter of over 160 years; AND

WHEREAS the Hyde Park Neighborhood Plan (HPNP), adopted by the City of Austin in 2000 and included in the Imagine Austin Comprehensive Plan of 2012, affirms the goal of maintaining the historic relationship between Hyde Park and ASH; AND

WHEREAS the Hyde Park Neighborhood Association has been involved in the planning process of nearby development projects, including Central Park, Central Market, the Heart Hospital, Gables, and the Triangle; AND

WHEREAS Hyde Park is one of the most densely populated areas of Austin with a critical need to preserve remaining public open space; AND

WHEREAS recent development near Hyde Park has substantially increased water runoff that has overtaxed its old infrastructure, resulting in flooded homes near the Guadalupe corridor;

THEREFORE, be it resolved that the Hyde Park Neighborhood Association urges the preservation of ASH structures, trees, and campus character. We request action to preserve and restore the historic ASH Administration Building. Any future plans to develop any portion of the ASH property should be restricted to public use and should require the input of surrounding neighborhood stakeholders.

Moreover, any future plans should be compatible with the historic and residential character of Hyde Park, in accordance with the Hyde Park Neighborhood Plan. Flood mitigation structures and improvements in the Hyde Park sewer system must be top priorities of any development plan.

The fifth agenda item was a resolution on neighborhood speed limits. An amendment was proposed but failed. The final resolution vote was 28 in favor, none opposed, and no abstentions. The resolution reads as follows:

WHEREAS Hyde Park is a residential neighborhood close to the University of Texas and highly frequented by pedestrians and bicyclists; AND

WHEREAS the streets of Hyde Park are without a fully connected sidewalk grid; AND

WHEREAS pedestrians – including children – and bicycle traffic must mix with automobiles traveling on narrow, unstriped roads that have cars parked along both sides; AND

WHEREAS an audit of City of Austin speed limit records reveals that a number of residential streets in Hyde Park permit speeds of 30 MPH often resulting in commuters traveling in excess of 30 MPH; AND

WHEREAS studies of pedestrians involved in accidents with automobiles\* show that serious injury is more likely to occur at higher speeds;

THEREFORE, be it resolved that the Hyde Park Neighborhood Association requests all residential streets (except Duval Street and 45th Street) currently allowing 30 MPH be reduced to 25 MPH.

\*" ...the average risk of severe injury to a pedestrian struck by a vehicle reaches 10% at an impact speed of 16 mph, 25% at 23 mph, 50% at 31 mph, 75% at 39 mph, and 90% at 46 mph. The average risk of death for a pedestrian reaches 10% at an impact speed of 23 mph, 25% at 32 mph, 50% at 42 mph, 75% at 50 mph, and 90% at 58 mph." ([www.aaaafoundation.org/sites/default/files/2011PedestrianRiskVs-Speed.pdf](http://www.aaaafoundation.org/sites/default/files/2011PedestrianRiskVs-Speed.pdf))

The meeting concluded with introductions of new attendees, followed by expressions of appreciation to neighbor Jim Ellinger for another successful Flag Day celebration. Thanks were also extended to the organizers and participants of the June pool party. A report on the walking tour with Kathie Tovo in the June Pecan Press was corrected to Waller Creek. There will be an HPNA August meeting and the ice cream social will be held before the start of the new school year. A flier from TexDot seeking citizen input on proposed changes to I-35 was distributed. Volunteers for upcoming Steering Committee vacancies were solicited. Sign-topper discounts for residents of the local historic district will be taken up at the next Steering Committee meeting.

The meeting was adjourned at 8:28 pm

– Submitted by Susan Marshall  
Co-Secretary, HPNA



**GOOD  
NEIGHBOR  
POLICY**

**FRESHPLUS**  
GROCERY • MARKET • DELI  
HYDE PARK  
408 E. 43rd St. • 512/459-8922

# Shipe Park History... ...cont'd from page 1

of rocks was formed near the site of the bridge over Waller Creek, creating a swimming hole that was enjoyed by children looking for a respite from the summer heat. It became clear that the community needed a larger pool and so construction began on a pool to be filled with refreshingly cold spring water from the nearby springs that dot Waller Creek. It was drained and refilled each night, as were many drain-and-fill pools around town. It was during this period that the park was finally renamed Shipe Park in honor of the community founder.

It must have been a tremendous event when the new Shipe Pool had its grand opening on May 15, 1934! One can imagine the celebration likely included a band, speeches by important personalities of the day, and homemade food and desserts lovingly made by the residents to share with the excited crowd – much like the Pool Opening Party of today.

Over the years, the park changed with the times as playscapes were constructed and replaced with newer ones in the shade of the big live oak trees, and the handball court was replaced with the popular new basketball court. Two tennis courts were added, as



1945 Pool Party, Courtesy of the Austin History Center

were lights, planted beds, swing sets, and sidewalks. In accordance with Austin's new sanitation codes, the drain-and-fill pump was replaced in 1985 and a pump house was built to house the new chlorinated system.

One particularly productive period in the history of the park was from 1997 to 2000, when a group of leaders from the Hyde Park Neighborhood Association including Ann Graham, Susan Moffat, and Suzee Brooks organized several large projects: pathways, bike racks, a modern playscape with baby swings, the installation of the bridge over Waller Creek, and reconstruction of the creek banks with erosion-control techniques. They also arranged both the removal of a beloved but dying elm tree beside the creek and its replacement, a new pecan tree with a restful bench beneath it. Additionally, the group installed a colorful

Continued on page 19



Paige's Kitchen Addition,  
78704

We design and build around you  
so you feel right, at home.

CGSDB.COM | 512.444.1580



**If your car could talk...**

**It would choose the Muffin Shop**

**512-453-5287**  
**6615 Shirley Ave.**  
**www.muffinmuffler.com**





# Shipe Park, 1996 - 2000

All photos by Ann Graham  
 Top: Shipe Park Swings and Playscape, 1996



Above: Michelle Grieshaber and Elizabeth Lee Paint Benches while Sharon and Joe Majors Rake, May 1997  
 Left: Installation of the Waller Creek Bridge  
 Below: The original Shipe Pool Mural







Here is a rare opportunity to own a Historic Landmark meticulously restored by top Austin professionals. The details of the Victorian Queen Anne Cottage are so well preserved that to walk up the path and enter the beautiful Wilkins-Heath house takes you back to the world of 1888. Set in a naturalized secluded oasis in the Fairview Park area of Travis Heights, it must be seen to be fully appreciated. 512-917-1930 or email [LTeam@austin.rr.com](mailto:LTeam@austin.rr.com) for an appointment.

PRESENTED BY  
**LIN TEAM, OLD AUSTIN REALTOR®**  
**LANDMARK PROPERTIES**

[VintageAustinHomes.com](http://VintageAustinHomes.com)  
[OldAustinRealtor.com](http://OldAustinRealtor.com)

I live here, I work here.  
 Your Neighborhood Specialist

When it's time to choose a Realtor, choose a true neighborhood expert. I provide exemplary customer service along with innovative, peerless marketing strategies, and accurate, in-depth knowledge of our neighborhood and its unique homes.

Whether you are buying, selling, or investing, contact me today for a complimentary consultation.

Rooted in results.



**TAMMY YOUNG**  
 Owner, Broker  
 GRI, Platinum Top 50  
 512-695-6940 c  
[tammy@seedpropertygroup.com](mailto:tammy@seedpropertygroup.com)



2014 & 2015  
 ABJ Top Residential Realtor Nominee

[seedpropertygroup.com](http://seedpropertygroup.com)



# Shipe Park History...

...cont'd from page 17

mural on the pump house, created by 12 students in an after-school program called "Totally Cool, Totally Art" at the Hancock Recreation Center.

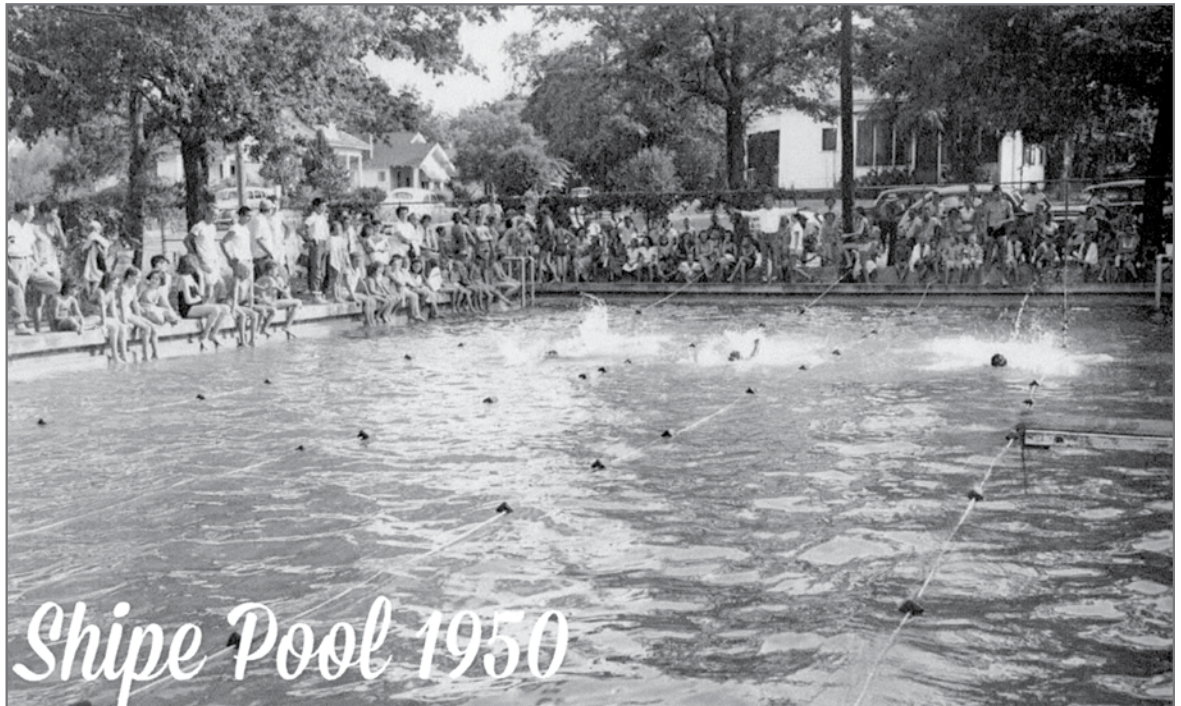
To top it off, the group arranged for a lovely low wall and arched gateway to be built on the north side of the park on 45th Street using petrified wood harvested from the recently demolished Petrified Wood Motel, a fixture in the community for years. The petrified wood was sourced in Glen Rose and the motel is featured in the book, *Stone Treehouses of Texas* by Charles Garrett. Walgreens built a store on the old site using similar harvested pieces of petrified wood in honor of the old motel. This beautiful gateway addition is a lasting symbol of the love and caring that the community has shown towards Shipe Park as it welcomes folks from all over town to enjoy the beautiful park.

Around 2006, another group of motivated neighbors spearheaded by Jill Nokes secured money from Austin Energy as mitigation for Austin Energy's erection of the huge electrical towers along the western edge of Hyde Park on Guadalupe Street. This money was used to install a sprinkler system and plant many beautiful trees around the park and inside the pool area. Each year, these new trees are lovingly tended during spring cleanup so that they will be admired and appreciated by future generations.

In 2008, a group called "Friends of Shipe Park" was formed by founding members Mark Fishman, Jill and Jack Nokes, Adam Wilson, and Alison Young, to build upon the efforts of the past volunteers who have improved and cared for the park. This group initiated the It's My Park! Day cleanup in March and the wildly popular Pool Opening Party and Movie Night in June. It has completed many wonderful projects including constructing the path from the pool to the log cabin, painting the benches and tables their now-signature color, Shipe Park Blue, and creating

the incredible mural on the pump house walls. After several years of fundraising, the mural was designed and installed by local artists Pascal Simon and Hollie Brown at a cost of \$45,000. The mural itself includes whimsical elements created by community members during several workshops held at the nearby Griffin School. What a magical addition to the pool – the mural sparkles in the sun while the children who helped create it play and swim underneath it!

In addition, Friends of Shipe Park has worked tirelessly to protect the beloved pools from the threat of imminent closure these past eight years. A surprise



1950 Swim Race, Courtesy of Austin History Center

gift of over \$3,000,000 from the Austin City Council, due to the efforts of former councilwoman Laura Morrison, secured the rebuilding of a new pool with modern amenities. Hopefully this next chapter of progress for Shipe Park will inspire future community members to join in efforts to keep the park always in the hearts of Hyde Parkers. Many thanks to all the folks over the years who have truly made Shipe Park the Jewel of Hyde Park!

– Alison Young

*If you would like to volunteer your time, money, or ideas, contact Friends of Shipe Park using their Facebook page.*



# HYDE PARK & NORTH UNIVERSITY HOMES GALLERY



**JUST LISTED**

## 102 WEST 32ND STREET

1930s Colonial Revival with guest house and swimming pool. Main house has 3,064 SF with 4 BR, 4 BA, 2 LIV, 2 DIN. Beautifully updated kitchen & baths. 1-car garage.

Listed at \$1,075,000



**GREAT VALUE**

## 504 WEST 33RD STREET

Hemphill Park Townhomes. Quiet end unit, approx. 2,750 SF, 3 BR, 3 BA, 2 LIV, updated kitchen, large private courtyard, 2-car garage. No HOA or monthly fees.

Listed at \$650,000



**JUST LISTED**

## 838 EAST 37TH STREET

Spacious 1940s stone house located just south of Hancock Golf Course. 2,271 SF, one-story with 3 BR, 3 BA, 1 LIV, 2 DIN, 2-car garage. Walk to UT and Lee Elementary.

Listed at \$749,950



**NEW PRICE**

## 3500 TOM GREEN STREET

Traditional 1938 Craftsman home plus 1 BR, 1 BA garage apt located on large corner lot near U.T. House features 3 BR, 2.5 BA, 2 LIV, hardwoods, updated kitchen & baths.

Listed at \$879,000



**FOR LEASE**

## 201 WEST 32ND STREET

Available now! Unique 1928 stucco home located in historic Aldridge Place. 3-4 BR, 2 BA, 2 LIV. Hardwoods, beamed ceilings, Weigl ironwork, stained glass windows.

Listed at \$3,650/month



**JUST LISTED**

## 4605 EILERS AVENUE

Classic Hyde Park bungalow with 2nd story master addition. Open floor plan, approx 2,010 SF with 3 BR, 2 BA, 2 LIV. Also available for lease in July, \$3,300/mo.

Listed at \$675,000



**JUST LISTED**

## 821 HARRIS AVENUE

1930s storybook cottage just steps from Lee Elementary. 3 BR, 2 BA, 2 LIV, formal dining. Upstairs master suite. Stone patio, pergola, private gardens. Detached workshop.

Listed at \$700,000



**FOR LEASE**

## 3306 HARRIS PARK AVENUE

Charming renovated 1930s duplex available August 1st. Upstairs unit looks out onto treetops. 2 BR, 1 BA, 1 LIV, 1 DIN, screened-in porch. Quiet street six blocks from U.T.

Listed at \$2,100/mo.

**The Central Austin real estate market remains strong! Contact your neighborhood expert for a complimentary market analysis and customized marketing plan for your property.**

## Suzanne Pringle

Broker, REALTOR®

512.217.1047

suzanne.pringle@sothebysrealty.com



Kuper

**Sotheby's**  
INTERNATIONAL REALTY

